

Valves in sandwich plate design Nominal size 10

DESCRIPTION

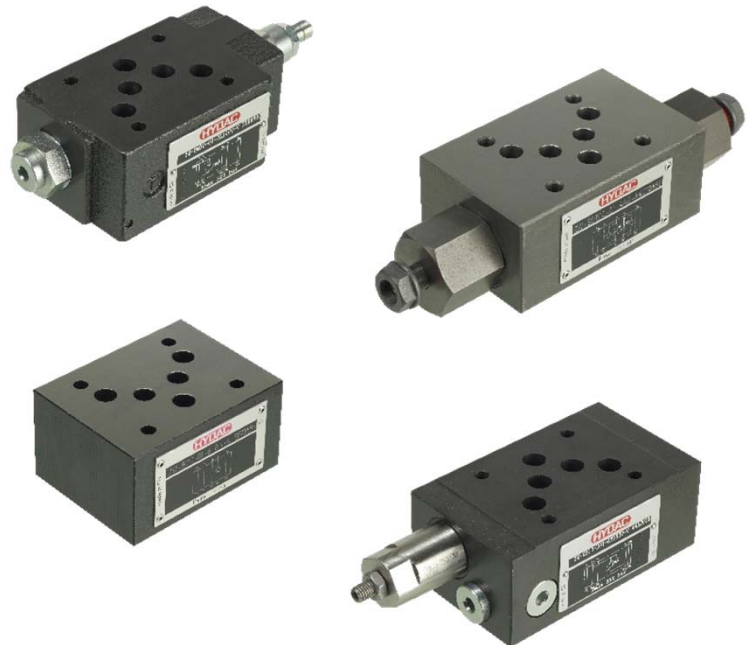
HYDAC valves in sandwich plate design in nominal size 10 enable modular design of the hydraulic control via stacked valve assembly. We offer them as pressure reducing and pressure relief valves for pressure control and as needle or flow valves with bypass check valve for flow control.

Furthermore, the sandwich plates are available as check valve for direction control, pilot-to-open and non-pilot-to-open, and as pressure compensator to realise the flow control function.

Mounting elements are dependent on the modular design of your hydraulic control and are thus not included in delivery.

FEATURES

- Available with pressure, flow, check and pressure compensator function
- Modular design of the hydraulic control
- Interface to ISO 4401-05-04-0-05 (Cetop 4.2-4-05-350)



Nominal size 10
up to 120 l/min²
up to 350 bar²

TECHNICAL DATA¹

General specifications

Ambient temperature	[°C]	-20 to +60
Mounting position		no orientation restrictions
Material		Casing: cast iron
		Name plate: aluminium
Surface coating		Valve housing: phosphate-plated

Hydraulic specifications

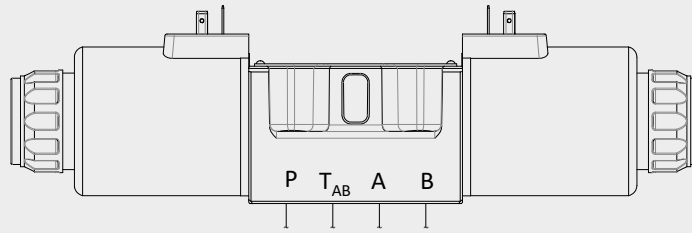
Operating pressure	[bar]	350 ²
Operating fluid		Hydraulic oil to DIN 51524 Part 1, 2 and 3
Temp. range of operating fluid	[°C]	-20 to +70
Viscosity	[mm ² /s]	10 to 400
Permitted contamination level of operating fluid		Class 20/18/15 to ISO 4406
Sealing material		NBR, FKM (standard)

¹ see "Conditions and Instructions for Valves" in brochure 53.000

² in consideration of the charts "Supplementary technical data"

CONTENTS

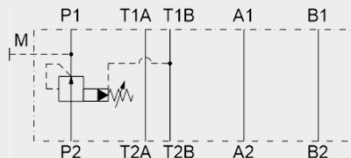
Directional valve



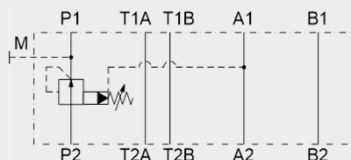
Pressure reducing valves

page 4

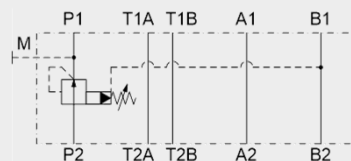
ZW-DM10...PT



ZW-DM10...PB



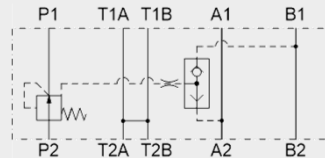
ZW-DM10...PA



Pressure compensators

page 10

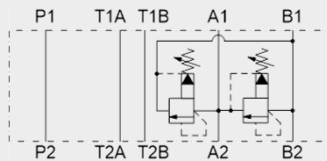
ZW-DW10...PAB



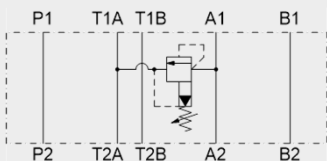
Pressure relief valves

page 7

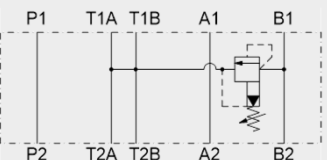
ZW-DB10...AB



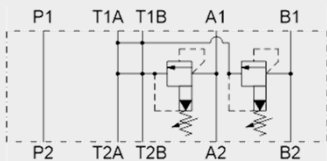
ZW-DB10...AT



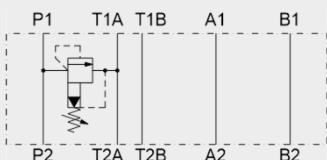
ZW-DB10...BT



ZW-DB10...ABT



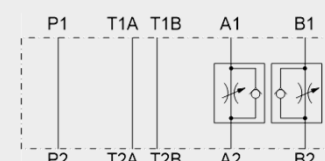
ZW-DB10...PT



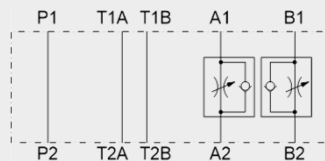
Needle valves

page 13

ZW-SDR10...AAB

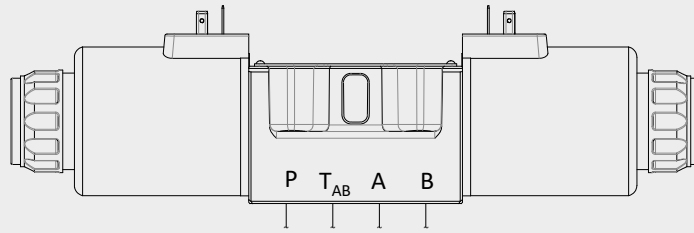


ZW-SDR10...ZAB



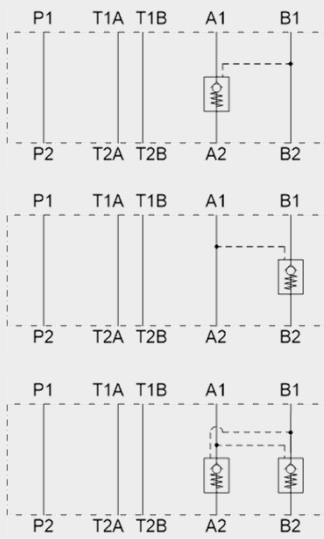
CONTENTS

Directional valve



Check valves pilot-to-open

page 16



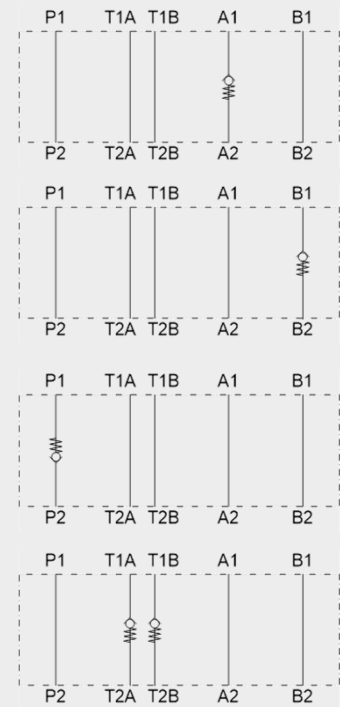
ZW-RP10...AA

ZW-RP10...AB

ZW-RP10...AAB

Check valves

page 19



ZW-RV10...A

ZW-RV10...B

ZW-RV10...P

ZW-RV10...T

Accessories

page 21

PRESSURE REDUCING VALVE IN SANDWICH PLATE DESIGN ZW – DM10



SUPPLEMENTARY TECHNICAL DATA

General specifications

Weight [kg] 2.7

Hydraulic specifications

Pressure symbol PA, PB [bar] 210

Flow rate [l/min] 80 controlled line P
100 free lines

Leakage [l/min] < 0.7

MODEL CODE

ZW-DM 10 - 01 - PA - 070 V - N

Type

Pressure reducing valve in sandwich plate design, pilot-operated

Nominal size

10

Series

01 = specified by manufacturer

Spool symbol

PA = pressure control in port A
PB = pressure control in port B
PT = pressure control in port T

Pressure ranges

070 = 5 to 70 bar
140 = 8 to 140 bar
210 = 10 to 210 bar
320 = 15 to 320 bar (symbol PT only)

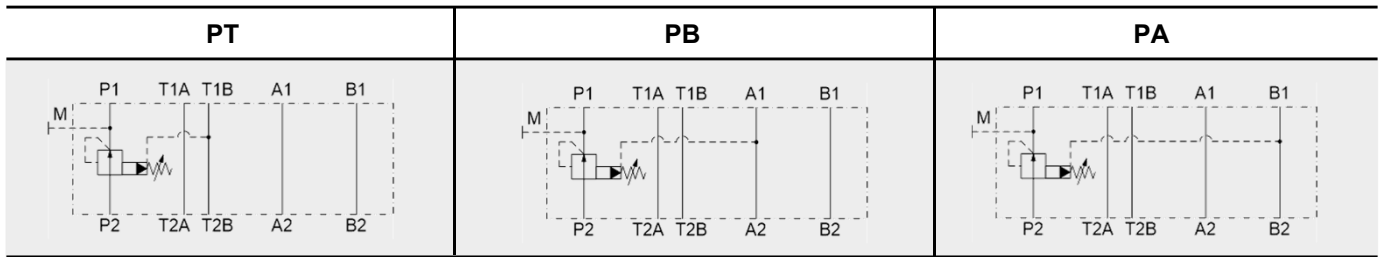
Adjustment types

V = adjustable using tool

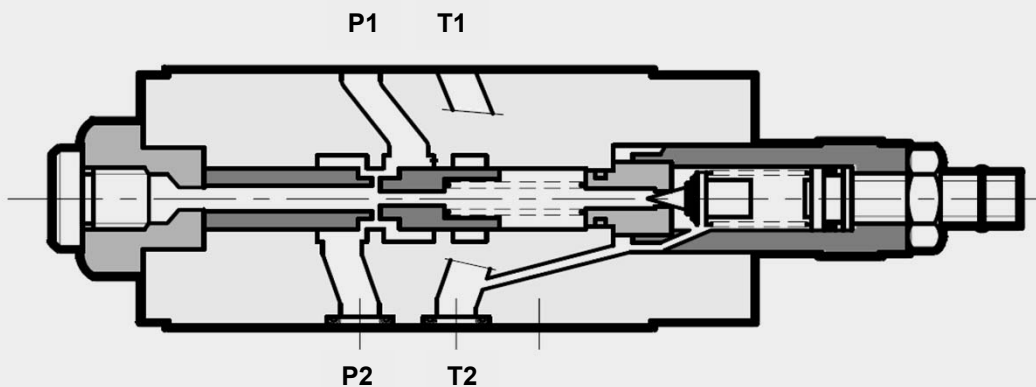
Sealing material

N = NBR
V = FKM (standard)

SPOOL TYPES / SYMBOLS



SECTION VIEW



FUNCTION

The direct-acting pressure reducing valve in sandwich plate design in nominal size 10 is used to reduce the inlet pressure at P2 to a smaller outlet pressure P1. The pressure tapping for the reduced pressure is designed differently depending on the symbol:

- reduced pressure in port A → PA
- reduced pressure in port B → PB
- reduced pressure in port P → PT

The outlet pressure P1 can be tapped at measuring port (M).

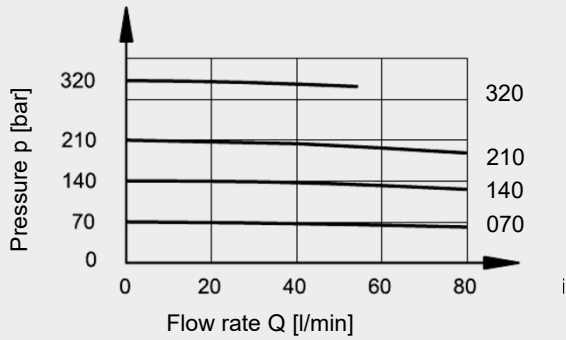
Hint

In designs PA and PB, the pressure losses of the subsequent components must be considered when selecting the inlet pressure.

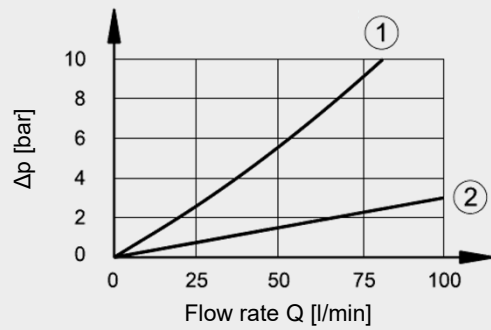
PERFORMANCE

measured at $v = 36 \text{ mm}^2/\text{s}$ and $T_{\text{oil}} = 50^\circ\text{C}$

Control



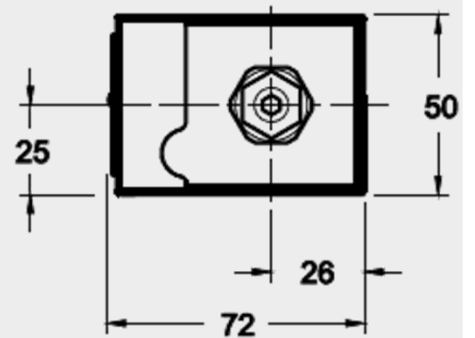
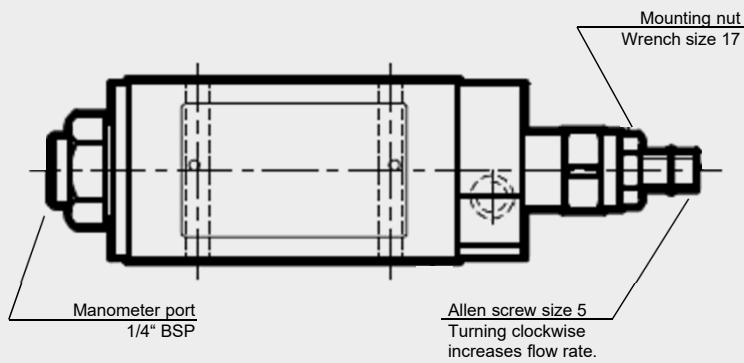
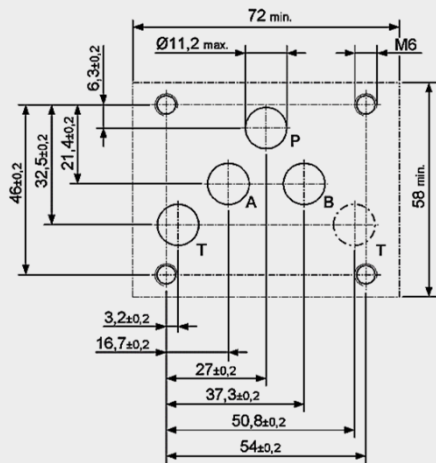
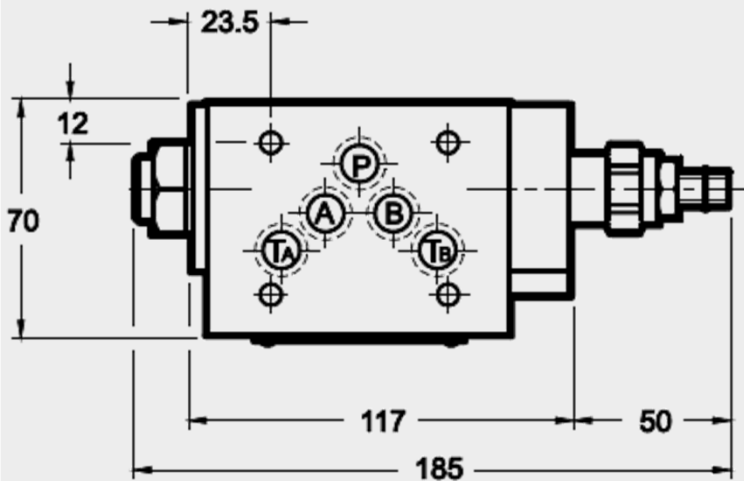
Pressure drop



- 1) P2 → P1
- 2) Free lines

DIMENSIONS

Interface to ISO 4401-05-04-0-05 (Cetop 4.2-4-05-350)



PRESSURE RELIEF VALVE IN SANDWICH PLATE DESIGN ZW – DB10



SUPPLEMENTARY TECHNICAL DATA

General specifications

Weight	[kg]	2.8
		3 (symbol AB and ABT)

Hydraulic specifications

Flow rate	[l/min]	120
-----------	---------	-----

MODEL CODE

ZW-DB 10 - D01 - AB 070 V - N

Type

Pressure relief valve in sandwich plate design, pilot-operated

Nominal size

10

Series

D01 = specified by manufacturer

Spool symbol

AB = pressure limiting in port B or A, outflow to port A or B
 AT = pressure limiting in port A, outflow to port T
 BT = pressure limiting in port B, outflow to port T
 PT = pressure limiting in port P, outflow to port T
 ABT = pressure limiting in port A and B, outflow to port T

Pressure ranges

070 = 6 to 70 bar
 140 = 6 to 140 bar
 210 = 6 to 210 bar
 350 = 6 to 350 bar

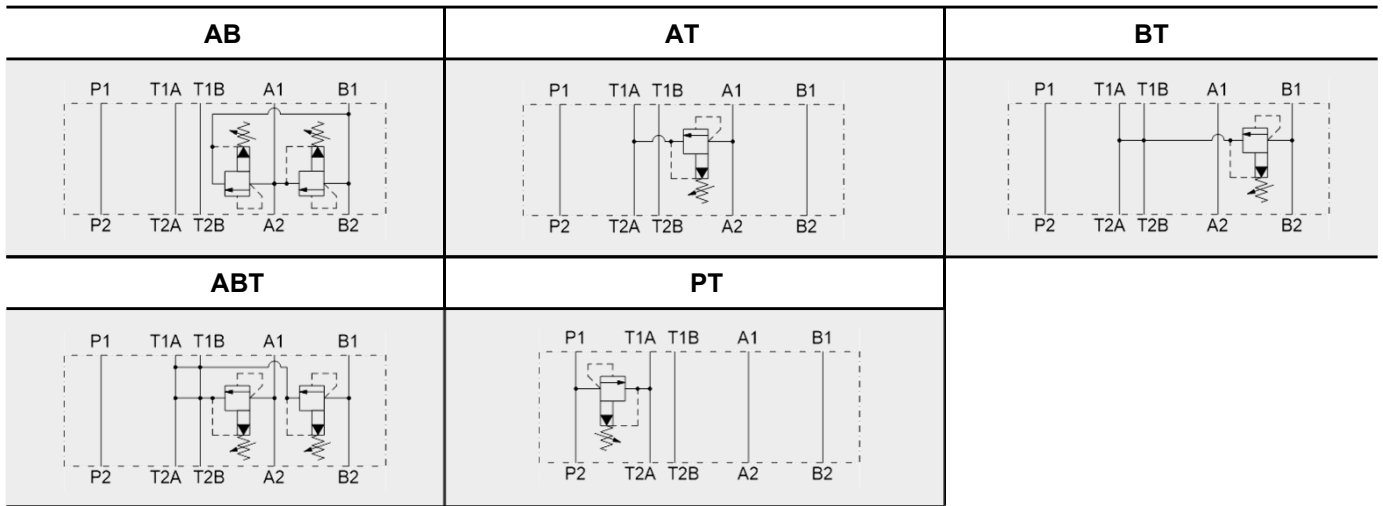
Adjustment types

V = adjustable using tool

Sealing material

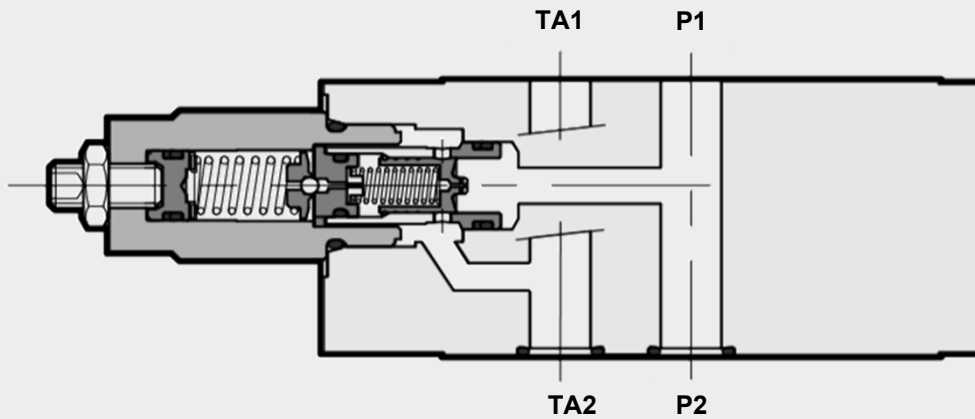
N = NBR
 V = FKM (standard)

SPOOL TYPES / SYMBOLS



SECTION VIEW

Example PT



FUNCTION

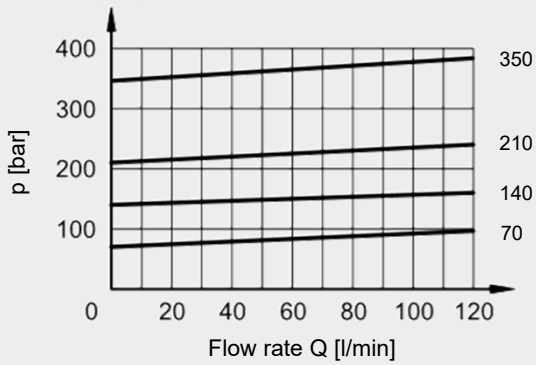
The pressure relief valve in sandwich plate design in nominal size 10 is a pilot-operated spool valve, which limits the pressure in the system.

If the pressure at port P exceeds the pressure setting, the pilot poppet opens, so a small flow flows to the tank via pilot stage. Because of the resulting pressure difference, the main piston moves towards the return spring and allows flow from port P to T.

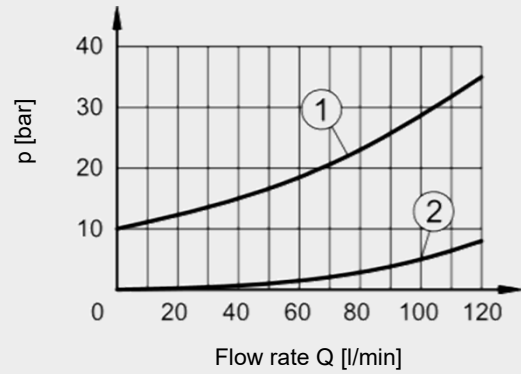
PERFORMANCE

measured at $v = 36 \text{ mm}^2/\text{s}$ and $T_{\text{oil}} = 50^\circ\text{C}$

Control

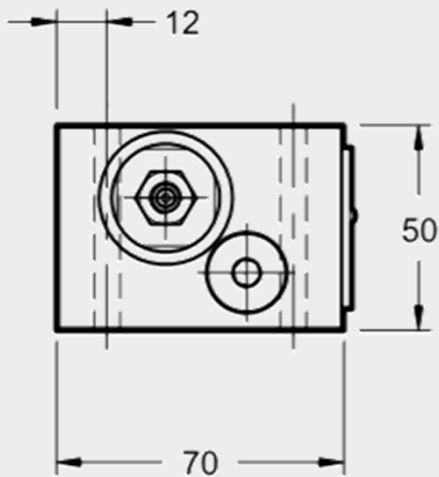


Pressure drop

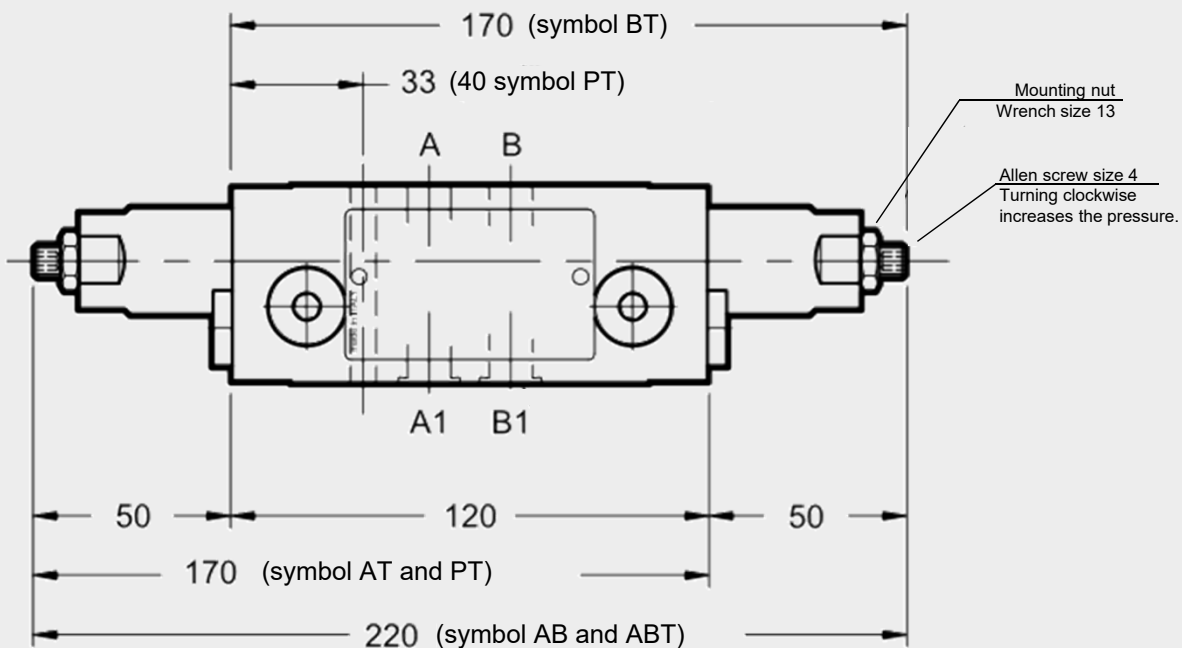
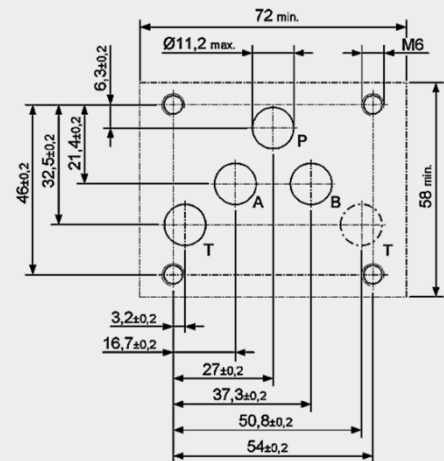


- 1) Controlled line symbol PT, AT, BT, ABT
- 2) Free line

DIMENSIONS



Interface to ISO 4401-05-04-0-05 (Cetop 4.2-4-05-350)



PRESSURE COMPENSATOR IN SANDWICH PLATE DESIGN ZW – DW10



SUPPLEMENTARY TECHNICAL DATA

General specifications

Weight [kg] 2.7

Hydraulic specifications

Flow rate [l/min] 100

MODEL CODE

ZW-DW 10 - 01 - PAB 4 - V

Type

Pressure compensator in sandwich plate design

Nominal size

10

Series

01 = specified by manufacturer

Spool symbol

PAB = 2-way pressure compensator

Pressure ranges

4 = 4 bar

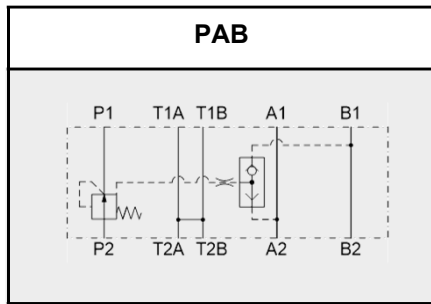
8 = 8 bar

Sealing material

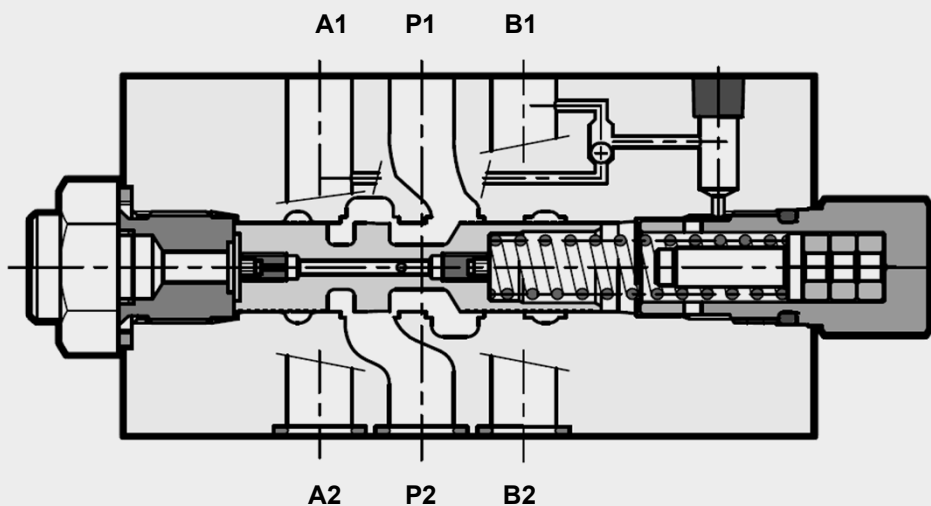
N = NBR

V = FKM (standard)

SPOOL TYPES / SYMBOLS



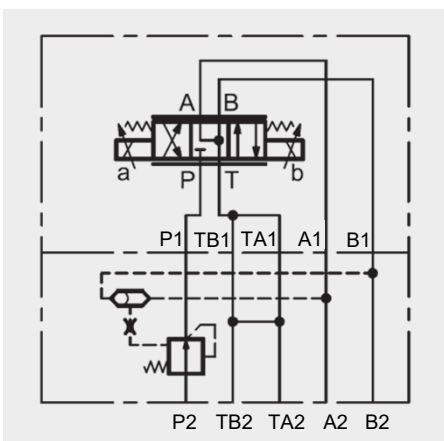
SECTION VIEW



FUNCTION

The pressure compensator in sandwich plate design in nominal size 10 keeps the pressure loss constant between inlet P and – depending on the remote control of the integrated shuttle valve – the inlet to either consumer port A or B. In combination with a needle valve or proportional directional valve results in a constant flow rate to the consumer at port A or B. The control pressure of the pressure compensator can be specified between 4 and 8 bar depending on the design.

Application example for meter-in flow control at cylinder port A or B with a proportional directional valve:

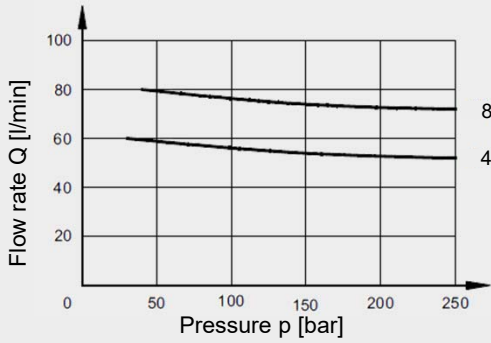


PERFORMANCE

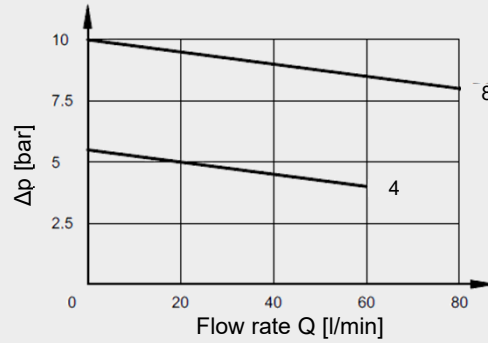
measured at $v = 36 \text{ mm}^2/\text{s}$ and $T_{\text{oil}} = 50^\circ\text{C}$

2-way pressure compensator

Flow pressure $Q = f(p)$

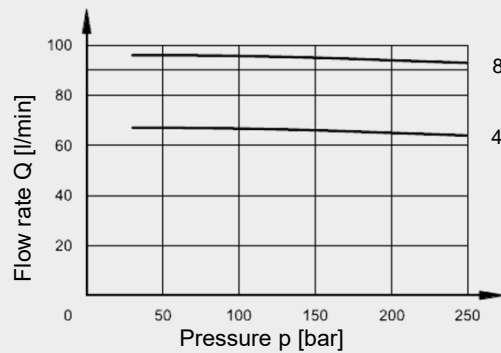


Pressure drop $\Delta p = f(Q)$

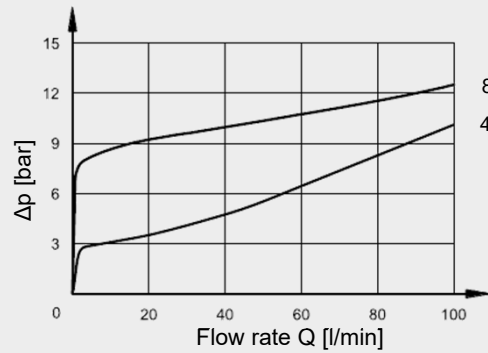


3-way pressure compensator

Flow pressure $Q = f(p)$

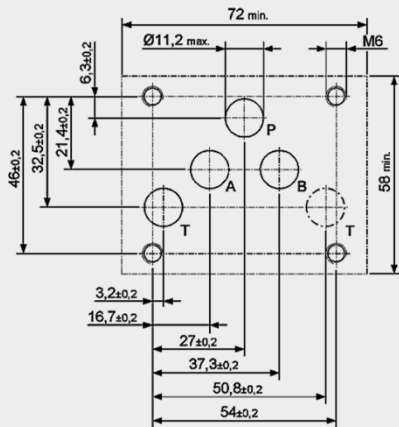


Pressure drop $\Delta p = f(Q)$

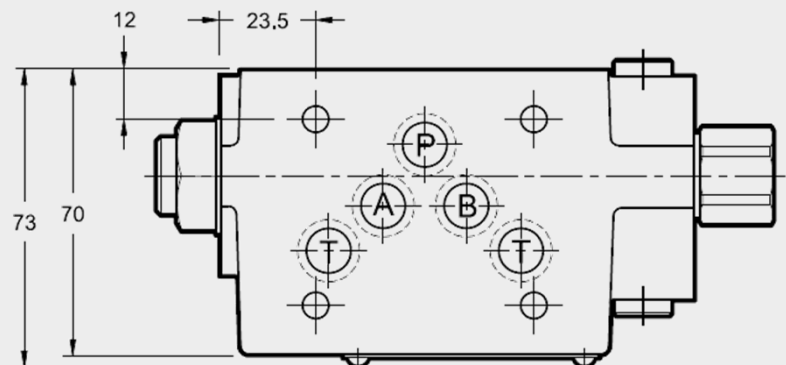
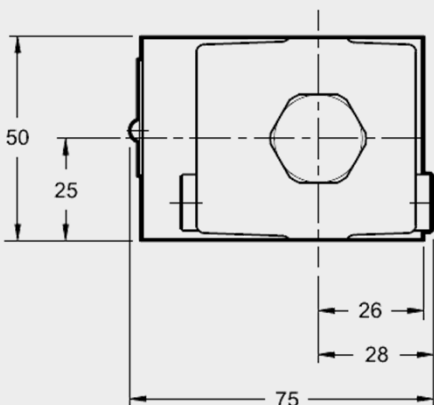
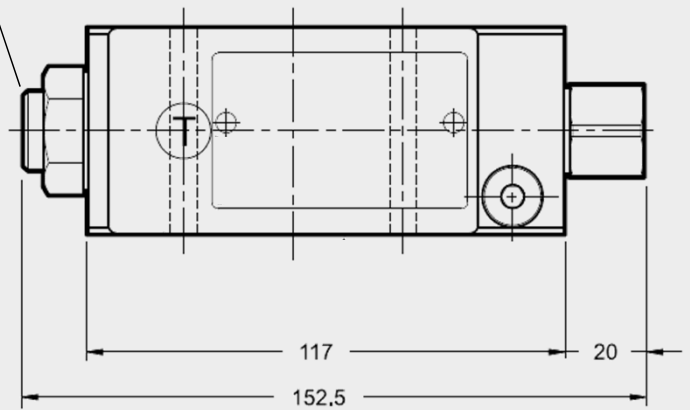


DIMENSIONS

Interface to ISO 4401-05-04-0-05
(Cetop 4.2-4-05-350)



Mounting nut 1/4" BSP



NEEDLE VALVE IN SANDWICH PLATE DESIGN ZW – SDR10



SUPPLEMENTARY TECHNICAL DATA

General specifications

Weight	[kg]	3.3
--------	------	-----

Hydraulic specifications

Cracking pressure	[bar]	0.4
-------------------	-------	-----

check valve

Flow rate	[l/min]	100
-----------	---------	-----

MODEL CODE

ZW-SDR 10 - 01 - AAB - N

Type

Needle valve in sandwich plate design

Nominal size

10

Series

01 = specified by manufacturer

Spool symbol

AAB = meter-out in port A and B

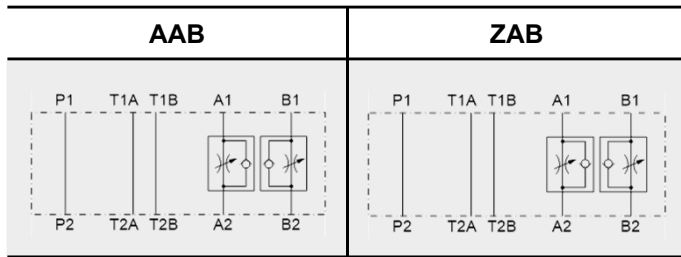
ZAB = meter-in in port A and B

Sealing material

N = NBR

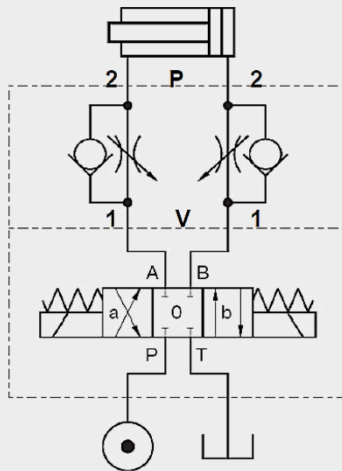
V = FKM (standard)

SPOOL TYPES / SYMBOLS



INSTALLATION EXAMPLE

Symbol AAB



FUNCTION

The needle valve in sandwich plate design in nominal size 10 is used to control a flow rate in flow direction.

In the reverse direction there is free flow through the valve if the cracking pressure is exceeded. The valve opens when the inlet pressure at the check valve is higher than the outlet pressure including the pressure spring force.

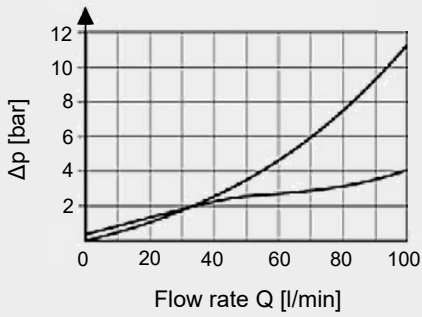
The throttling of the flow rate depends on the version:

- flow from consumer to directional valve in port A and B → AAB
- flow from consumer valve to actuator in port A and B → ZAB

PERFORMANCE

measured at $v = 32 \text{ mm}^2/\text{s}$ and $T_{\text{oil}} = 50^\circ\text{C}$

Pressure drop

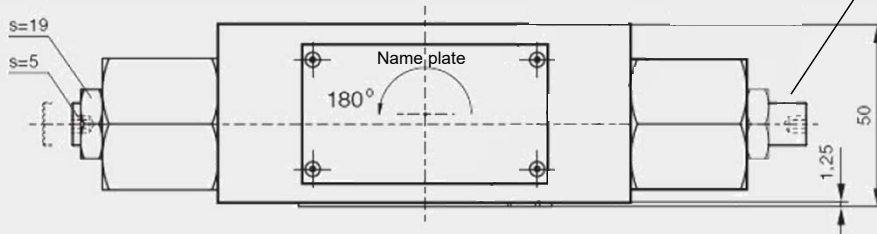
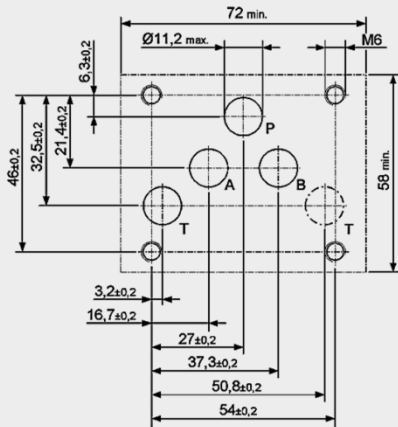


P → V
Throttle completely open

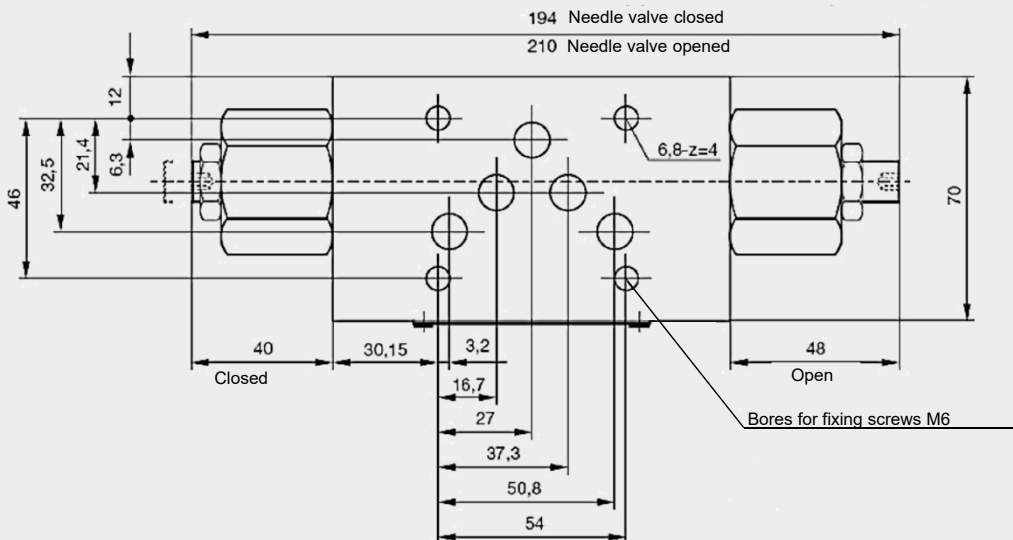
V → P
through check valve

DIMENSIONS

Interface to ISO 4401-05-04-0-05
(Cetop 4.2-4-05-350)



Throttle screw
Turning clockwise reduces flow rate.



CHECK VALVE PILOT-TO-OPEN IN SANDWICH PLATE DESIGN ZW – RP10



SUPPLEMENTARY TECHNICAL DATA

General specifications

Weight	[kg]	3.5
--------	------	-----

Hydraulic specifications

Cracking pressure	[bar]	0.5
-------------------	-------	-----

Non-return valve		
------------------	--	--

Flow rate	[l/min]	100
-----------	---------	-----

Pilot ratio		3.6 : 1
-------------	--	---------

MODEL CODE

ZW-RP 10 - 01 - AA - N

Type

Check valve, pilot-to-open in sandwich plate design

Nominal size

10

Series

01 = specified by manufacturer

Spool symbol

AA = meter-out in port A

AB = meter-out in port B

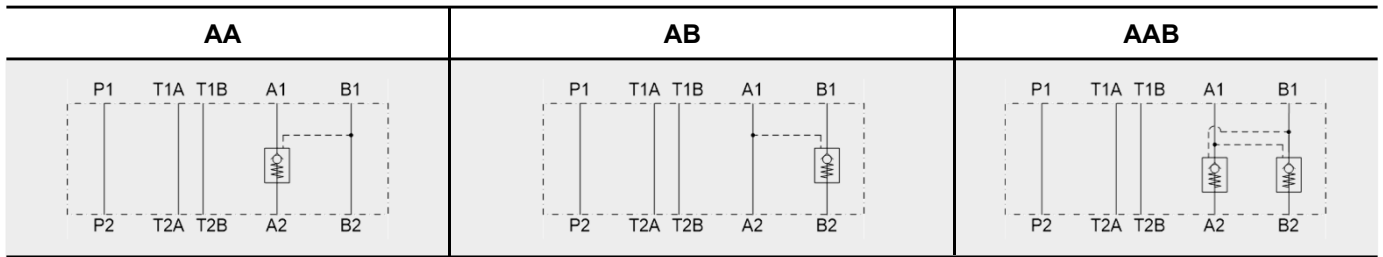
AAB = meter-out in port A and B

Sealing material

N = NBR

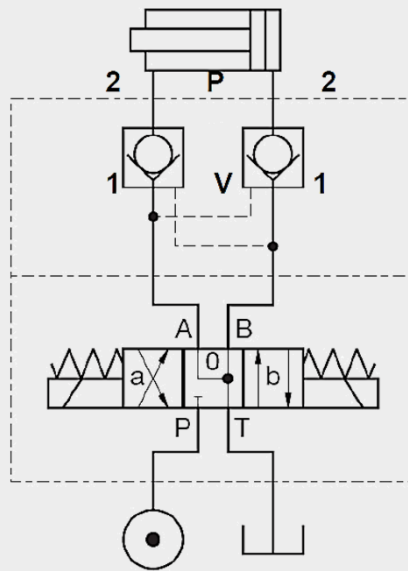
V = FKM (standard)

SPOOL TYPES / SYMBOLS



INSTALLATION EXAMPLE

Symbol AAB



FUNCTION

The check valve, pilot-to-open in sandwich plate design in nominal size 10 is a direct-acting, spring-loaded poppet valve. It releases flow from the directional valve to the consumer and blocks flow from the consumer to the directional valve. To achieve this, the valve poppet is pressed into the seat and blocks the flow. If sufficiently high pilot pressure is built up in the relevant pilot port, the valve is unblocked and flow passes from the consumer to the directional valve. The required pilot pressure is based on the pressure difference between the ports to be unblocked.

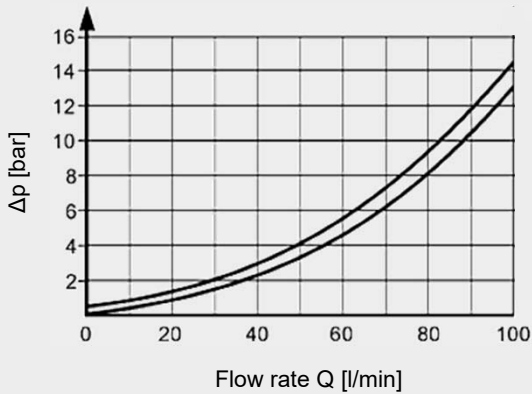
Hint

A pressure in the port of the directional valve influences the required control pressure.

PERFORMANCE

measured at $v = 32 \text{ mm}^2/\text{s}$ and $T_{\text{oil}} = 50^\circ\text{C}$

Pressure drop



$V \rightarrow P$ (1 \rightarrow 2)
against spring force

$P \rightarrow V$ (2 \rightarrow 1)
pilot-operated

Use the following formula to calculate the min. required pilot pressure in port B:

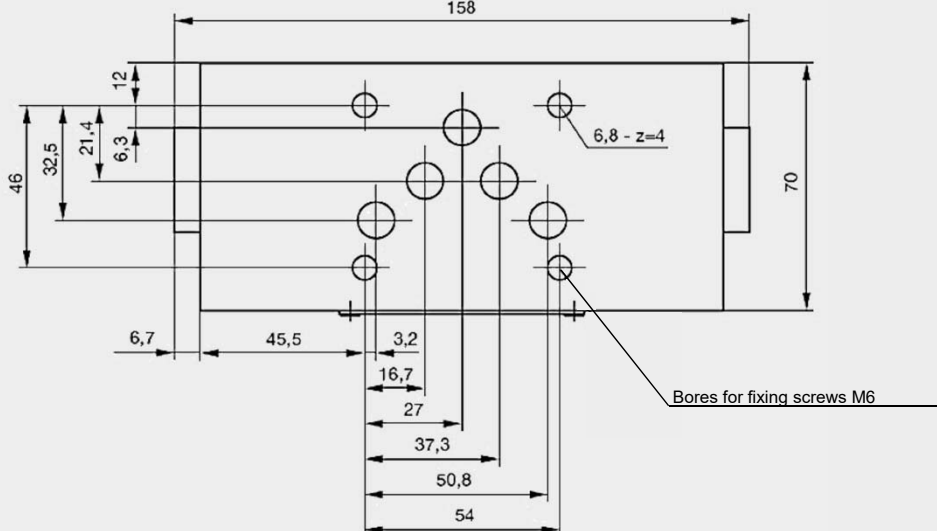
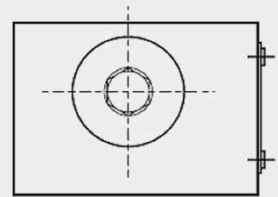
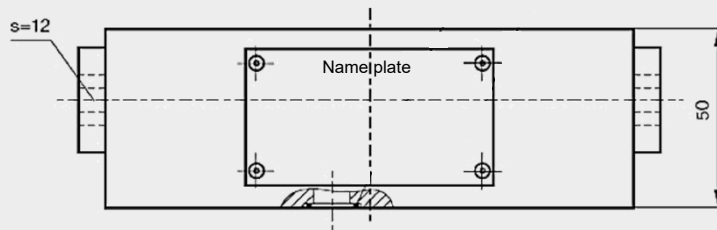
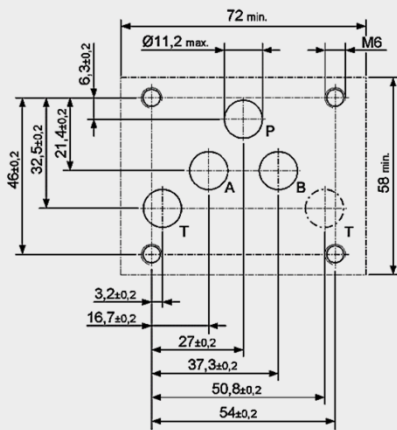
$$p_{\text{control}} = \frac{p_{A2} - p_{A1}}{\phi} + p_{A1}$$

Use the following formula to calculate the min. required pilot pressure in port A:

$$p_{\text{control}} = \frac{p_{B2} - p_{B1}}{\phi} + p_{B1}$$

DIMENSIONS

Interface to ISO 4401-05-04-0-05
(Cetop 4.2-4-05-350)



CHECK VALVE IN SANDWICH PLATE DESIGN ZW – RV10



SUPPLEMENTARY TECHNICAL DATA

General specifications

Weight [kg] 2.77

Hydraulic specifications

Cracking pressure [bar] 0.4
check valve

Flow rate [l/min] 100

MODEL CODE

ZW-RV 10 - 01 - A 0.4 - N

Type

Check valve in sandwich plate design

Nominal size

10

Series

01 = specified by manufacturer

Spool symbol

A = check valve in port A
B = check valve in port B
P = check valve in port P
T = check valve in port T

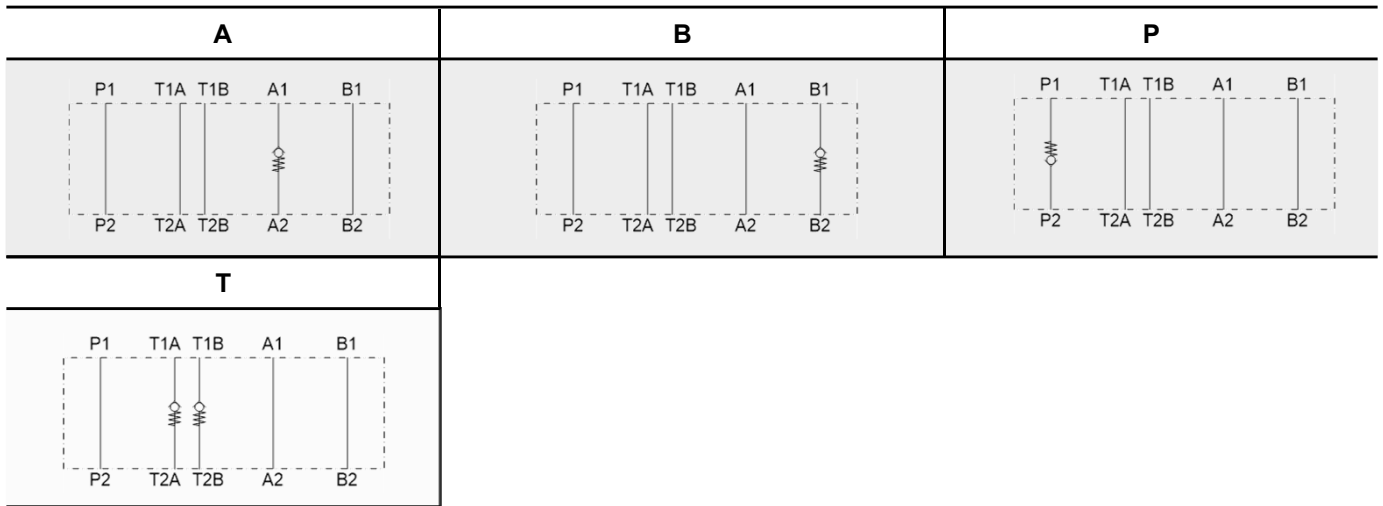
Cracking pressure

0.4 = 0.4 bar
Other cracking pressures on request

Sealing material

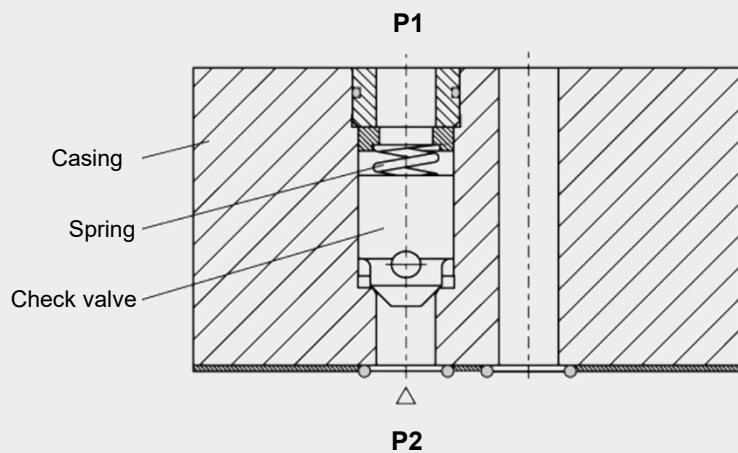
N = NBR
V = FKM (standard)

SPOOL TYPES / SYMBOLS



SECTION VIEW

Example P



FUNCTION

The check valve in sandwich plate design in nominal size 10 is a direct-acting, spring-loaded poppet valve. It releases the flow in one direction after exceeding the pilot spring force and blocks it in the opposite direction. To achieve this, the valve poppet is pressed into the seat and blocks the flow.

- flow blocked in port A from consumer to directional valve → A
- flow blocked in port B from consumer to directional valve → B
- return flow blocked to fluid power supply → P
- preload of meter-out to tank → T

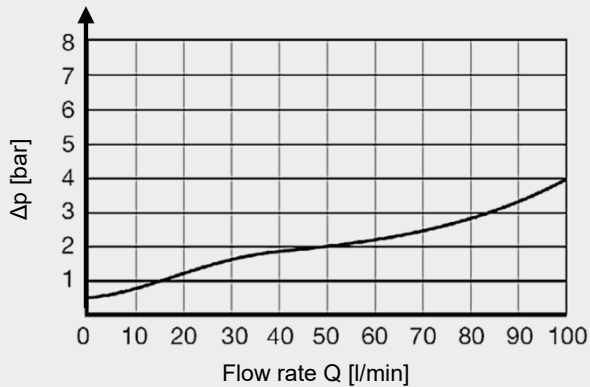
Hint

Spring-side pressures at the check element add to its cracking pressure.

PERFORMANCE

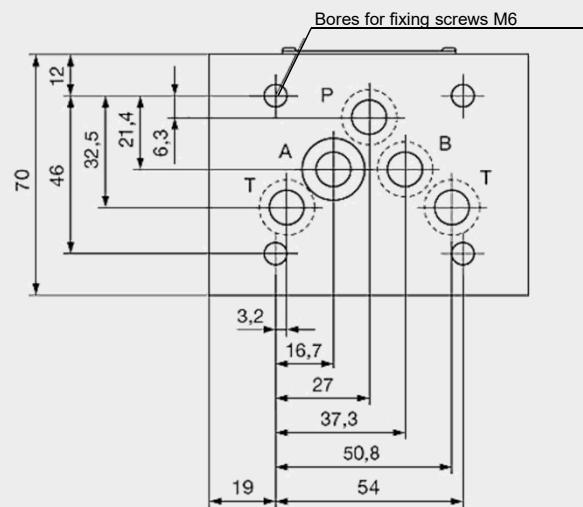
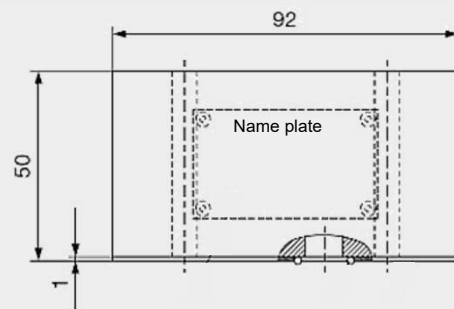
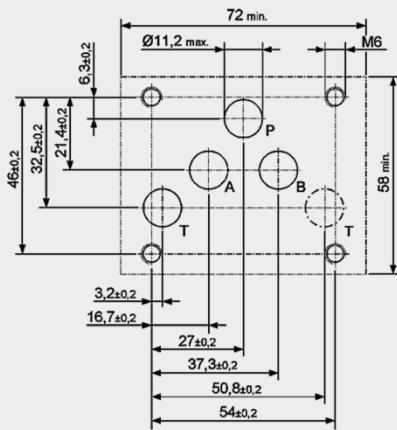
measured at $v = 32 \text{ mm}^2/\text{s}$ and $T_{\text{oil}} = 50^\circ\text{C}$

Pressure drop



DIMENSIONS

Interface to ISO 4401-05-04-0-05
(Cetop 4.2-4-05-350)



Note

The information in this brochure relates to the operating conditions and applications described. For applications or operating conditions not described, please contact the relevant technical department.
Subject to technical modifications.

ACCESSORIES

	Designation	Part no.
Seal kits (5-part set)	12.42 x 1.78 80 Sh NBR	3492434
	12.42 x 1.78 80 Sh FKM	3492433

HYDAC Fluidtechnik GmbH
Justus-von-Liebig-Str.
66280 Sulzbach/Saar, Germany
Tel: 0 68 97 /509-01
Fax: 0 68 97 /509-598
E-mail: valves@hydac.com