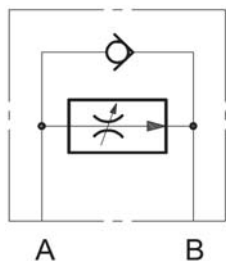




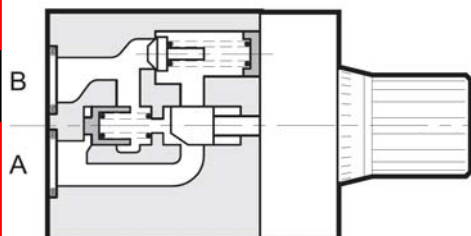
## Flow Regulator pressure-compensated Subplate to ISO6263 VP-2SR6

### SYMBOL



Up to **250 bar**  
Up to **30 l/min**

### FUNCTION



### FEATURES

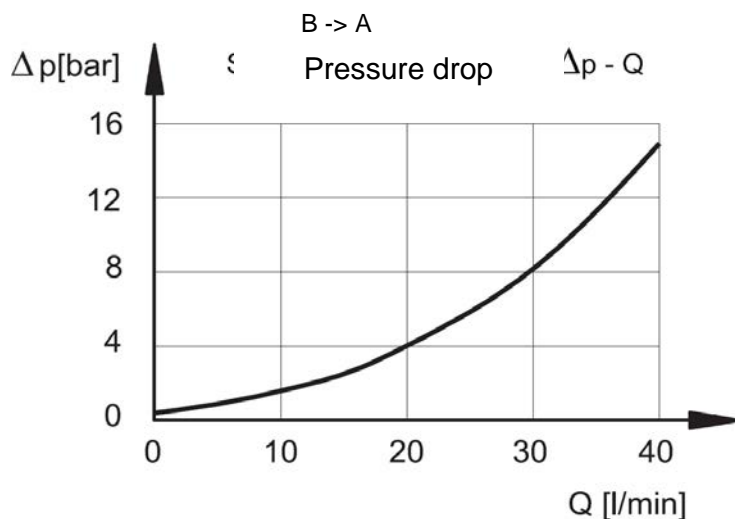
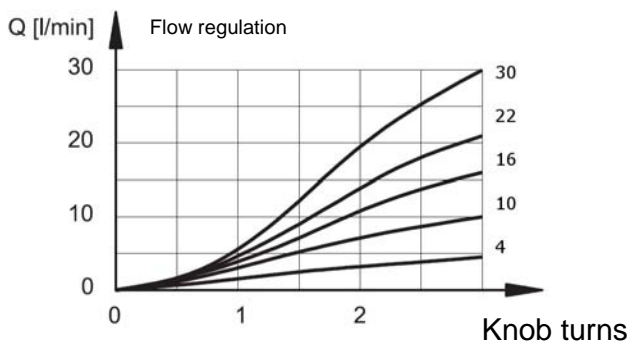
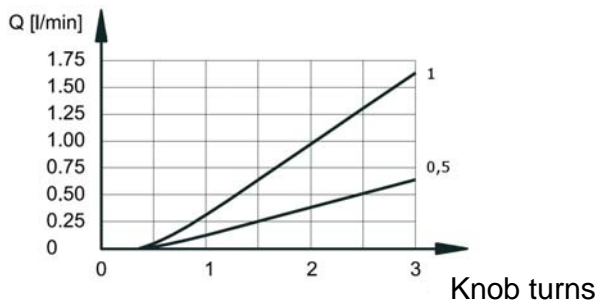
- Hole pattern to ISO 6263-03, Nominal size 6
- Adjustable flow control valve subplate mounting for flow control in one direction and full backflow in the opposite direction
- Independent from pressure by integrated pressure compensator
- Adjustable by turning knob

### SPECIFICATIONS

Operating pressure:	max. 250 bar
Minimal pressure difference:	max. 10 bar between A and B
Flow rate:	max. 0,5 / 1 / 4 / 10 / 16 / 22 / 30 l/min max. 40 l/min by the check valve (cracking pressure 0,5 bar)
Minimal adjustable Flow rate:	0,025 l/min
Operating fluid:	hydraulic oil to DIN 51524 part 1 and 2
Operating fluid temp. range:	-20°C up to max. +80°C
Ambient temperature range:	-20°C up to max. +50°C
Viscosity range:	7,4 – 400 mm <sup>2</sup> /s is recommended
Filtration:	Class 20/18/15 according to ISO 4406
Weight:	1,3 kg

### PERFORMANCE

measured at  $v = 36 \text{ mm}^2/\text{s}$  and  $T_{\text{oil}} = 50^\circ \text{C}$



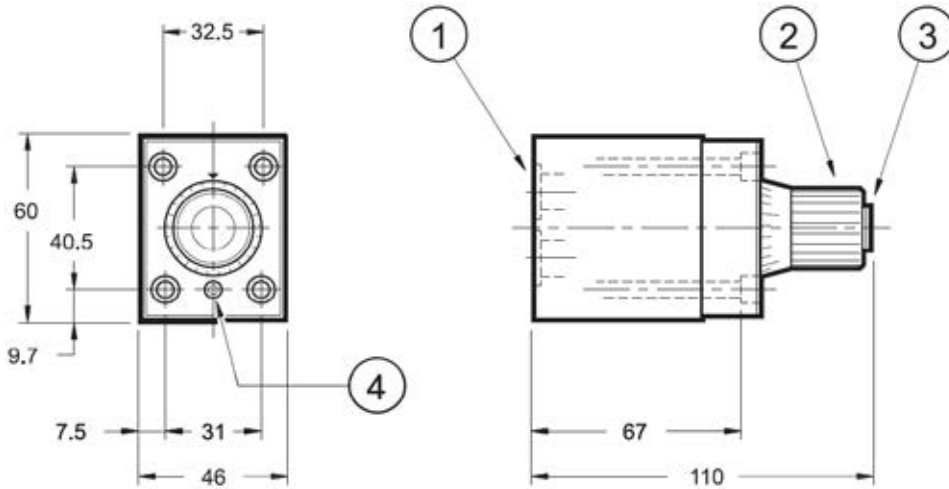
**Standard models**

Standard models	Part No.
VP-2SR6 D05SR S01/V	3541093
VP-2SR6 D1SR S01/V	3541094
VP-2SR6 D4SR S01/V	3541166
VP-2SR6 D10SR S01/V	3541169
VP-2SR6 D16SR S01/V	3541172
VP-2SR6 D22SR S01/V	3541173
VP-2SR6 D30SR S01/V	3541175
Other models on request	

**MODEL CODE**

	<u>VP-2SR6</u>	<u>D 05</u>	<u>S</u>	<u>R</u>	<u>S01 / V</u>
<b>Name and size</b>	2-way flow control valve nominal size 6				
<b>Curve</b>	D = depressive				
<b>Flow rate code</b>	05 = 0,5 l/min 1 = 1 l/min 4 = 4 l/min 10 = 10 l/min 16 = 16 l/min 22 = 22 l/min 30 = 30 l/min				
<b>Turning knob with scale</b>					
<b>Check valve</b>	R (cracking pressure 0,5 bar)				
<b>Type</b>	S01 = Standard				
<b>Seal material</b>	V = FKM (Standard) N = NBR				

**DIMENSIONS**

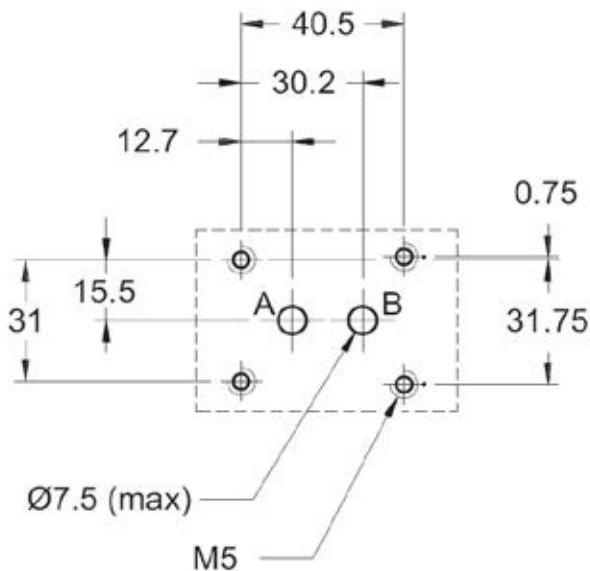


- 1) Mounting plate with O-rings:  
2x 14 x 2 FKM
- 2) Turning knob (3 turns) by  
turning clockwise the flow is rising
- 3) Regulation steps of the turning knob
- 4) Fastening screw of the  
turning knob

Fastening screws:  
4x Allen key M5x75 10.9  
Torque: 5 Nm + 0,5 Nm

All dimensions in mm.  
Fastening elements are not in the scope  
of delivery.

**Mounting plate to ISO 6263-03-03-\*-97**



Annotation  
The technical information in this  
brochure are relating to the operating  
conditions and applications.  
At deviant applications and/or  
operating conditions please contact  
the technical dept.  
Technical information are  
subject to technical modifications.

HYDAC Fluidtechnik GmbH  
Justus-von-Liebig-Str. 5  
66280 Sulzbach / Saar  
Tel.: 06897 / 509 -0  
Fax: 06897 / 509 -598  
Email: flutec@hydac.com