

**AUSTRALIAN RANGE
COOLING AND LUBRICATION SYSTEMS**



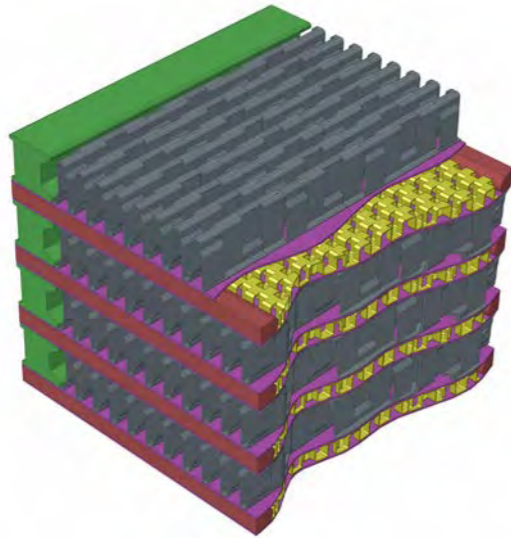
MAR.1.001.02.21

2021 Edition

PREFACE

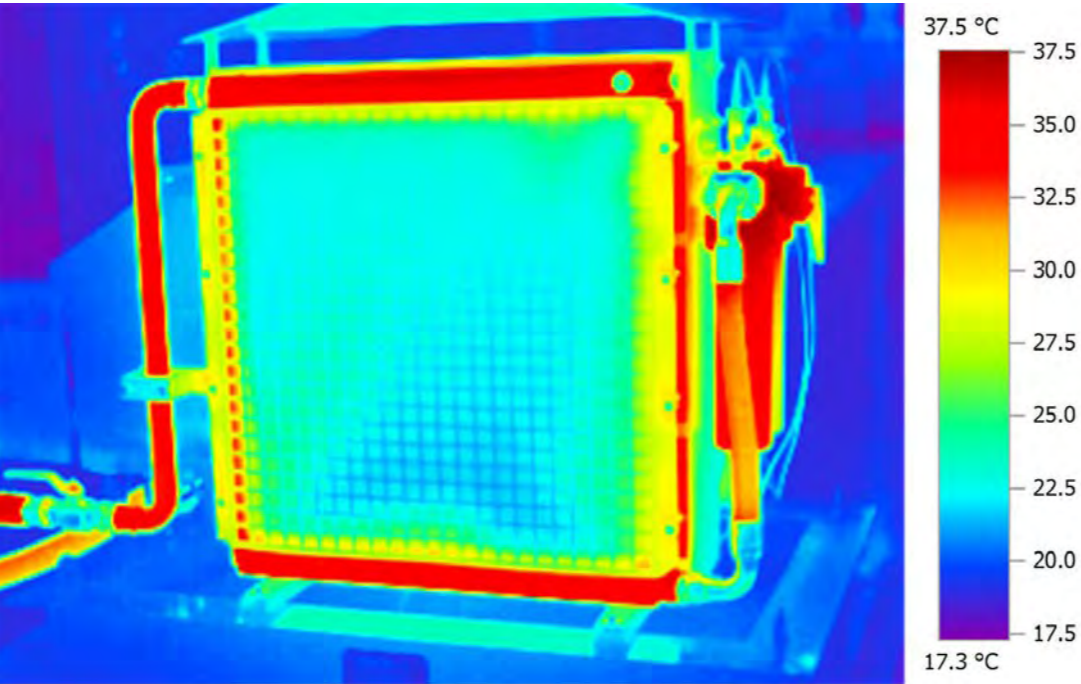
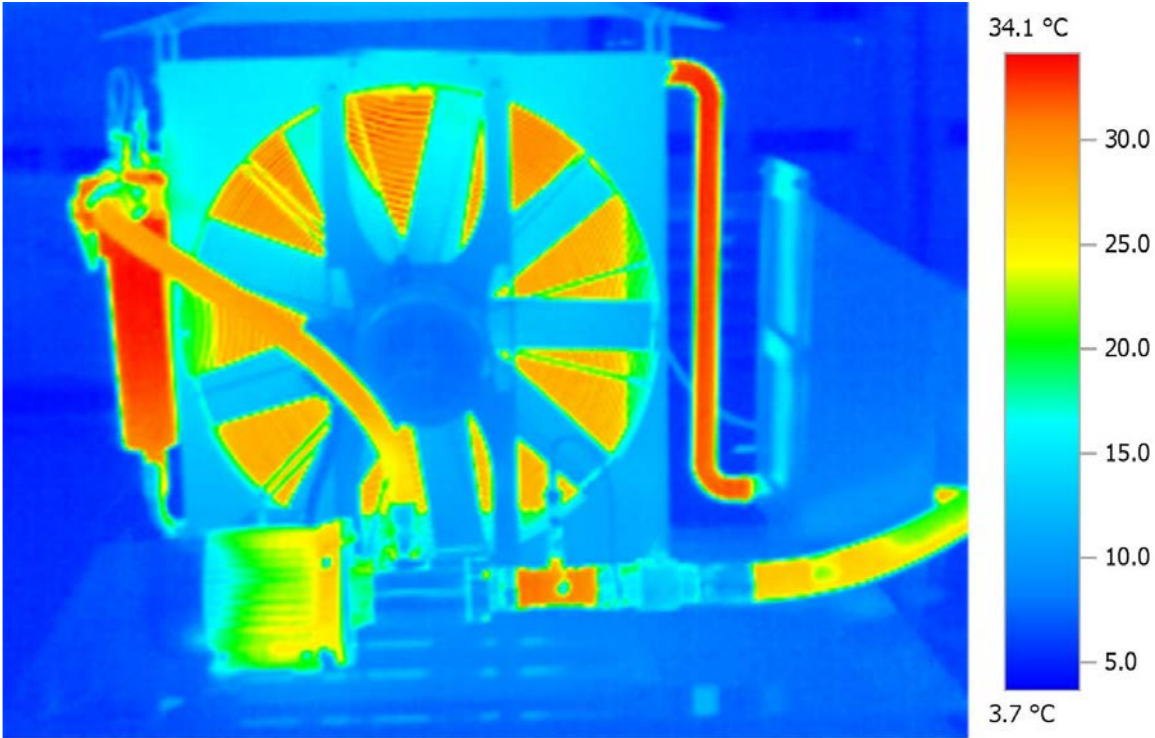
Throughout this catalogue, we aim at helping you explore our Australian range of Low Noise ACAF type cooling systems. This range has resulted from years of developing cooling systems that are tailor made to comply with the standards set for the Australasian industrial market.

Low Noise ACAF cooling system consists of a low noise screw pump delivering mineral oil to the cooling element via a filter. The cooling elements in 'plate and bar' construction demonstrate particularly impressive strength, design flexibility and optimal heat transfer. Our cooling science extends to our special fan designs which provide the optimum cooling requirements on industrial machines.



Design of a cooling element

- High strength
- Versatile design
- Optimal heat transfer



Our ACAF type cooling systems is versatile and can accommodate a wide range of accessories to help monitor and protect your machine at all times. From pressure sensors to electrical panels, we are well equipped to deal with all your requirements.

This catalogue demonstrates our cooling systems expertise and our deep understanding of the Australian market, its regulations and standards.

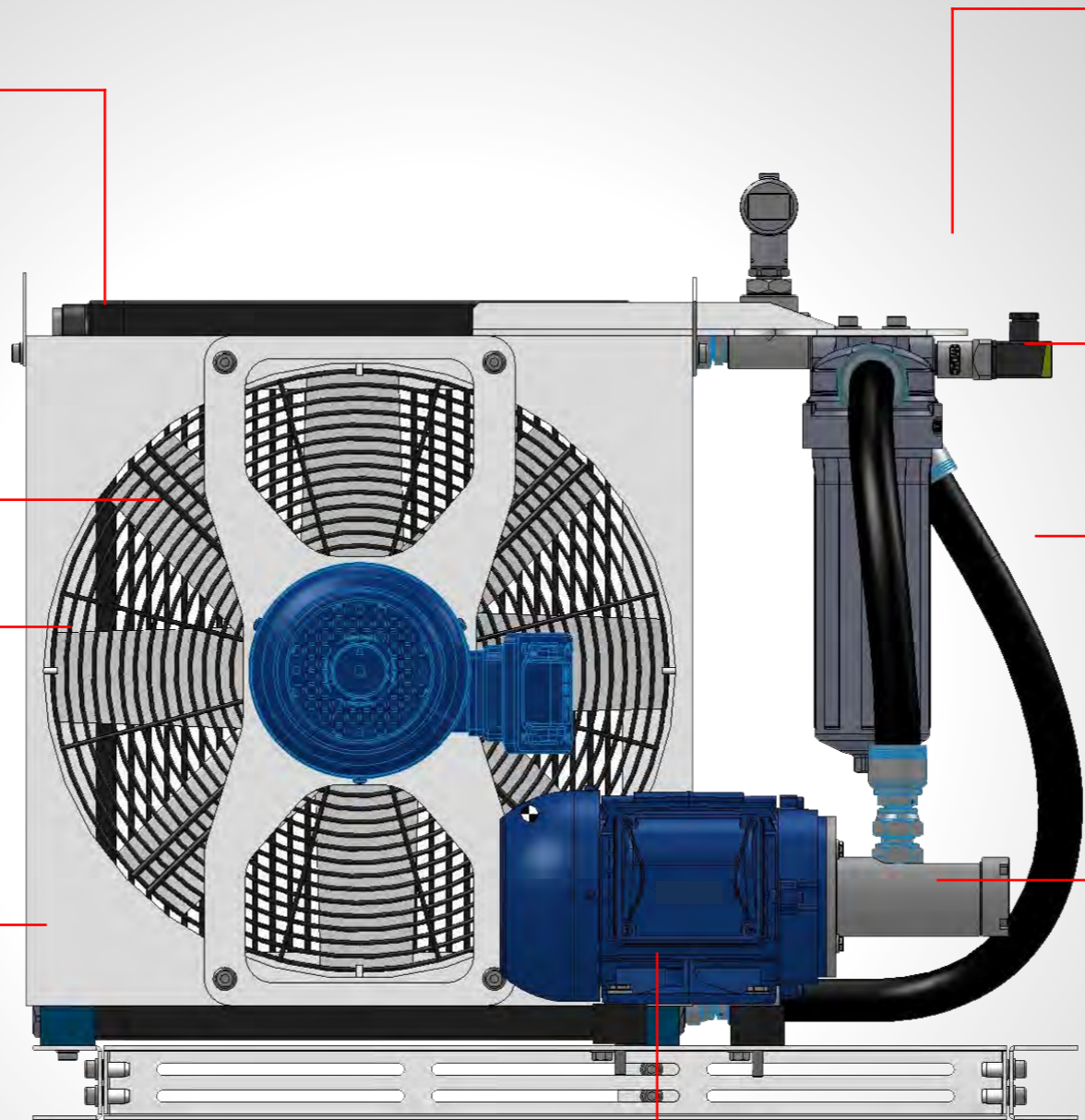
This catalogue is our complete Australian Market Range of cooling and lubrication systems. Therefore, all the codes in this catalogue are unique to Hydac Australia. As a result, you'll be privileged with fast availability and optimized market price when choosing one of our HYDAC Australian coolers.

TABLE OF CONTENT

■ Description Breakdown	5
■ ACAF Cooling Capacity	6
■ Technical Data - Mineral Oil	7
■ Technical Data - Water-Glycol	8
■ ACAF-LN2	9
■ ACAF-LN3	11
■ ACAF-LN4	12
■ ACAF-LN5	14
■ ACAF-LN7	15
■ ACAF-LN8	16
■ ACAF-LN9	17
■ ACAF-LN10	18
■ ACAF-LN11	19
■ ACAF-LN12	20
■ ACAF-LN14	21
■ Design your own ACAF	22

LOW NOISE ACAF

The ACAF-LN 2-14 air cooler series can be used in all areas where either oil or water-glycol is to be cooled with air. The coolers with an axial fan can be used in the return line as well as in the bypass flow. The wide range of accessories and optional versions mean that the coolers can be adapted flexibly to various applications.



PRESSURE RESISTANCE OF THE COOLING ELEMENT

- Dynamic operating pressure: 16 bar
- Static operating pressure: 21 bar

FAN

- Axial fan in suction version (standard)
- Axial fan in pushing version on request (note: approx. 10% less cooling capacity)

ENERGY RELATED PRODUCTS

- The fan unit of the AC-LN corresponds to the minimum efficiency levels specified in the Ecodesign directive or ErP directive (Energy-related Products) 2009/125/EC.

NOISE LEVELS

- See technical data ACAF-LN
- The noise levels are only reference values as the acoustic properties of a room, connections and reflection have an effect on the noise level.

ACCESSORIES

- Integrated thermal pressure bypass valve (IBT) (cannot be retrofitted)
- Thermostats
- Air filter grid or air filter mat
- Vibration damper
- Electrical Panel
- Switches, sensors, flow-meters etc

FLUIDS

- Oils (mineral oils, synthetic oils, high viscosity oils, biological oils, phosphate ester)
- Other fluids on request

VISCOSITY

- 3,000 mm²/s (standard)

TEMPERATURE RANGE

- Minimum / maximum ambient temperature: -20°C to +50°C (standard)
- Minimum / maximum temperature of the medium: +130°C

PUMP

- Screw pump with separate motor
 - Operating pressure: max. 10 bar
 - Negative suction pressure of the pump: max. -0.7 bar
 - Pump motor speed: 3,000 & 1,500 rpm
- Some systems may require a gear pump

MOTOR

- Three-phase motor
 - Efficiency class IE3 (only ≥ 0.75 kW)
 - Protection class IP55 or higher
 - Insulation class F
- Other versions on request.

DESCRIPTION BREAKDOWN

ACAF-LN4 2S 81 1.0 B M A MFX200 10 1 IBT45-3 bar

Cooler Type

ACAF-LN = Air cooler (oil) with integrated pump and filter

Size / motor speed

2-14 = Size
 L = 6 poles (1,000 rpm)
 S = 4 poles (1,500 rpm)
 H = 2 poles (3,000 rpm)

Flowrate L/min

4-20 = Screw Pump (ACAF-LN2)
 10-60 = Screw Pump (ACAF-LN4-6)
 50-150 = Screw Pump (ACAF-LN7-10)
 150-250 = Screw Pump (ACAF-LN11-14)

Revision

Clogging indicators

B = With visual indicator (Standard)
 D = With electrical and optical indicator

Fluids

M = Mineral oil
 W = Water glycol mix Please contact us for a water-Glycol mix application

Motor voltage

Standard voltages and frequencies for 3 phase motor

A = 415 V - 50 Hz
 B = 230/415 V - 50 Hz / 265 / 460V - 60 Hz
 C = Special*

AC-LN2 = 220-240 V - 50/60 Hz, single phase (*available on request)

(tolerance voltage $\pm 10\%$)

*Other voltages on request.

Size of filter (only ACAF-LN)

MFX100 = ACAF-LN2-3
 MFX200-FLND160-FLND250 = ACAF-LN4-6
 MFX200-LPF280-FLND250 = ACAF-LN7-9
 LPF280-RFLD660/661-FLND250/400-NF1350 = ACAF-LN10-14 *Other filters on request

Filtration rating in micron (only ACAF)

3 = 3 μm | MFX = Optimicron (ON)
 10 = 10 μm | FLND = Betamicron (BN4HC)
 20 = 20 μm | LPF = Optimicron (ON)

Color

1 = RAL 9002 (Standard)

Other colors on request.

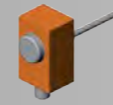
Bypass options

		Closing Temperature	Opening Pressure
IBT45-3 bar =	Integrated thermo-bypass valve (standard) 4	45°C	3 bar
IBT50-3 bar =	Integrated thermo-bypass valve (optional)	50°C	3 bar
IBT55-3 bar =	Integrated thermo-bypass valve (optional)	55°C	3 bar
IBT60-3 bar =	Integrated thermo-bypass valve (optional)	60°C	3 bar

Accessories

See HYDAC cooler catalogue for more information

Thermostat Adjustable TR/AITR



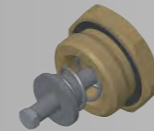
The TR/AITR is an electrical switch, opening or closing the circuit at the selected temperature. TR could be mounted in the tank; AITR is mounted in one of the cooling element free ports. TR/AITR are supplied with a probe holder.

Thermostat Fixed AITF



The AITF is an electrical switch, closing the circuit at a certain fixed temperature. TF could be mounted in the tank; AITF is mounted in one of the cooling element free ports including the adaptors.

Integrated pressure bypass valve IBP

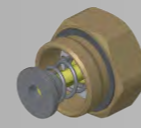


The IBP is a valve that closes the bypass channel of the cooler. When the pressure exceeds a certain value in the cooling the IBP opens the bypass channel and allows a part of the fluid to bypass the element.

Note:

This valve requires a special cooling element with integrated bypass channel. Therefore, it cannot be retrofitted.

Integrated temperature bypass valve IBT

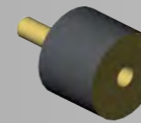


The IBT leaves the bypass channel open so that a part of the fluid bypasses the cooling element. Only when the fluid temperature reaches the required value, the IBT closes the bypass channel and the fluid is cooled down. So, a too low temperature of the fluid can be avoided i. e. at cold starts.

Note:

This valve requires a special cooling element with integrated bypass channel. Therefore, it cannot be retrofitted

Vibration absorbers GP



GP are rubber elements that are mounted between the cooler and the ground to absorb vibrations.

Element protection grid LFG/LFM/LS



Protective grid mounted in front of the element to protect the element from stones, sand, leaves, dust and any other external agent that can clog the air side of element. Only for sucking version of coolers available.

Please contact us for more information about electrical panels and other accessories mentioned in this catalogue



COOLING CAPACITY

Hydac ACAF's cooling capacity depends on the oil flow rate and the temperature difference ΔT between oil inlet and air inlet (Ambient temperature). Once a flow rate is selected, the cooling capacity can be calculated as follows:

$$\text{Cooling Capacity (KW)} = \text{Specific heat dissipation (KW/K)} \times (\text{Fluid inlet temperature}(\text{°C}) - \text{Max ambient temperature}(\text{°C}))$$

E.g: Oil temperature at the inlet of the cooler is 90°C and the maximum ambient temperature in Victoria is 47°C. The pump delivers about 100 l/min. So the total cooling capacity of the ACAF-LN5S would be 21.5 KW (0.5 x 43°C). Consequently, on a cold day (15°C ambient), you'll get a total cooling capacity of 37.5 KW.

You can also use our cooler calculation software for designing. COOL-IT allows you to input your system data and select the cooler that satisfies your system requirements. Furthermore, you can generate a technical report of the selected cooler. Please contact our technical sales department to get a copy of the software.

HYDAC Cool-IT! [Home](#) [English](#) [Log in](#)

[Catalogue](#) [Product config](#) [Profile](#) [Saved searches](#) [News](#) **99**

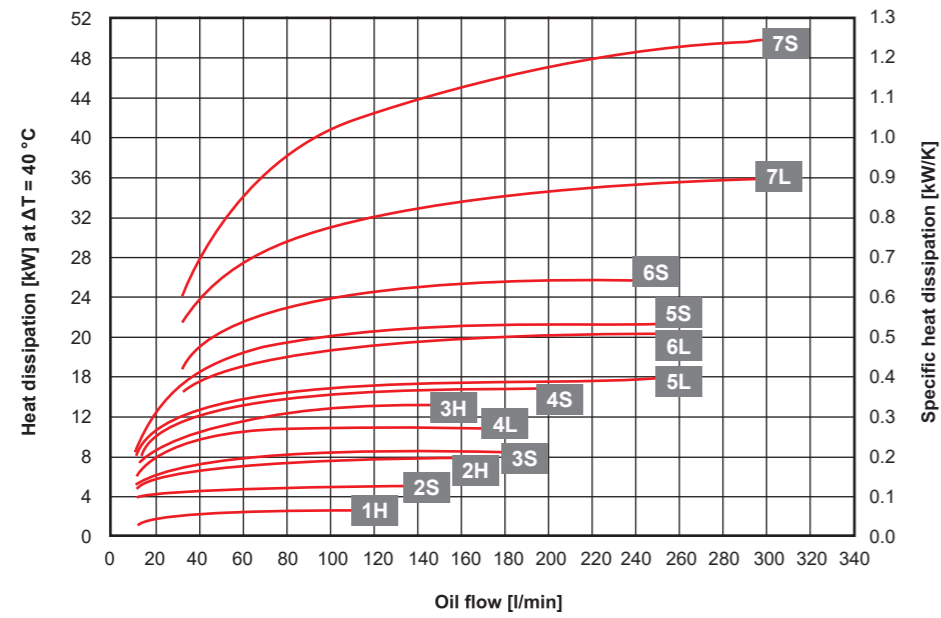
[Cool-IT! Assistance](#)

Hydac Cool-IT ©. Designed and built by Cryms Sagl and Pri.Ma SA. Maintained by the core team of Mezzovico.
Currently version v1.6

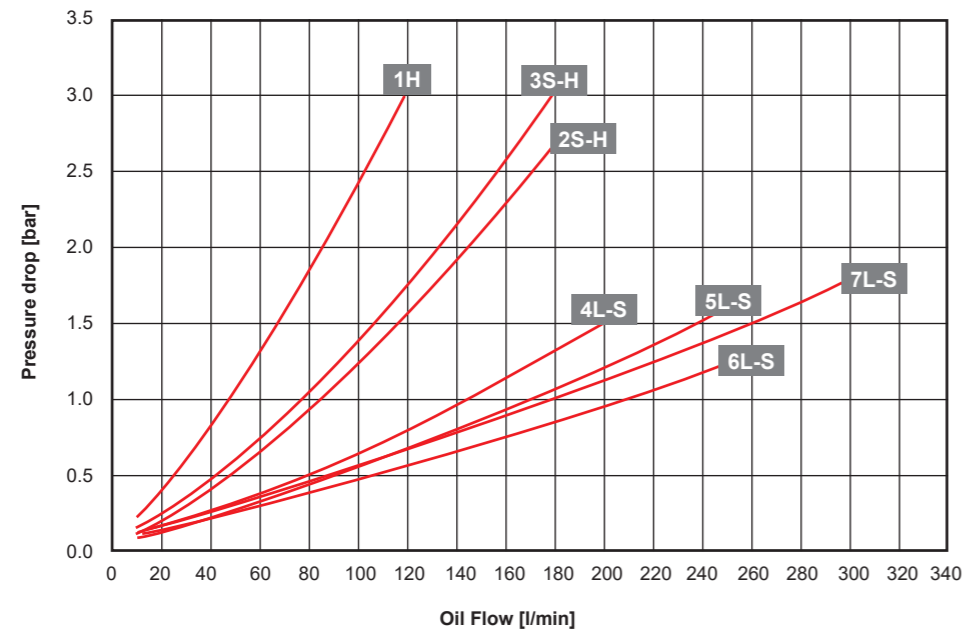
TECHNICAL DATA

MINERAL OIL

ACAF-LN 2-7



Tolerance: ± 5 %

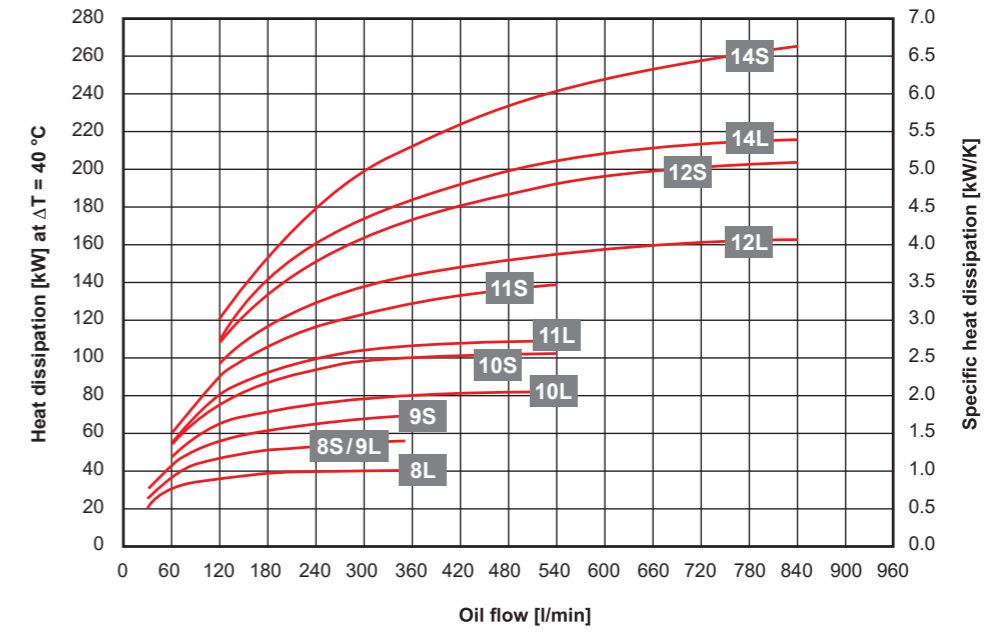


Measured at 30 mm²/s
Tolerance: ± 5 %

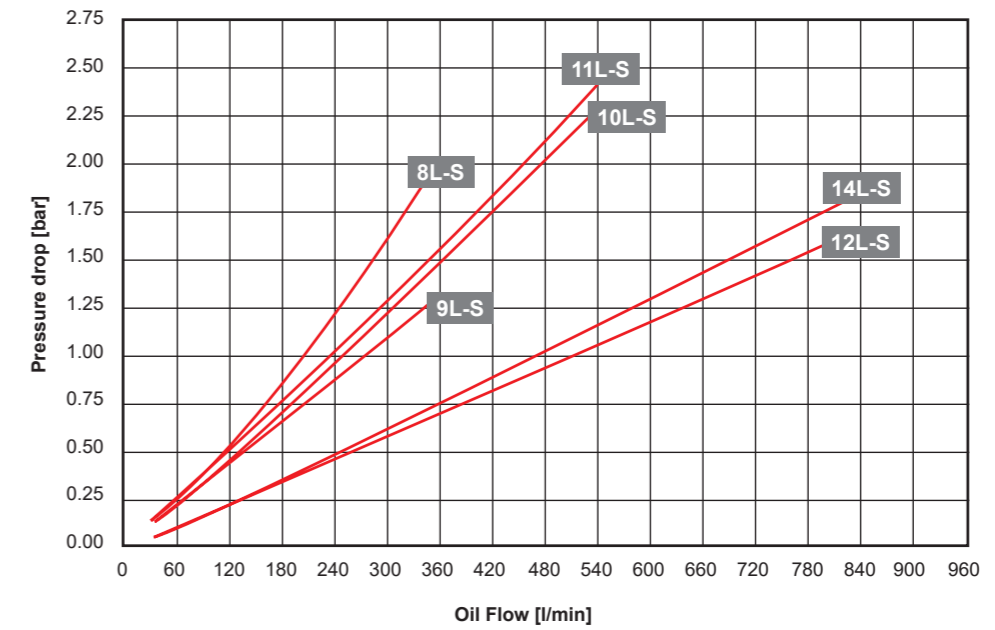
For other viscosities, the pressure loss must be multiplied by the conversion factor K:

Viscosity (mm ² /s)	10	15	22	30	46	68	100	150
Factor K	0.35	0.5	0.75	1	1.4	1.9	2.5	3.5

ACAF-LN 8-14



Tolerance: ± 5 %

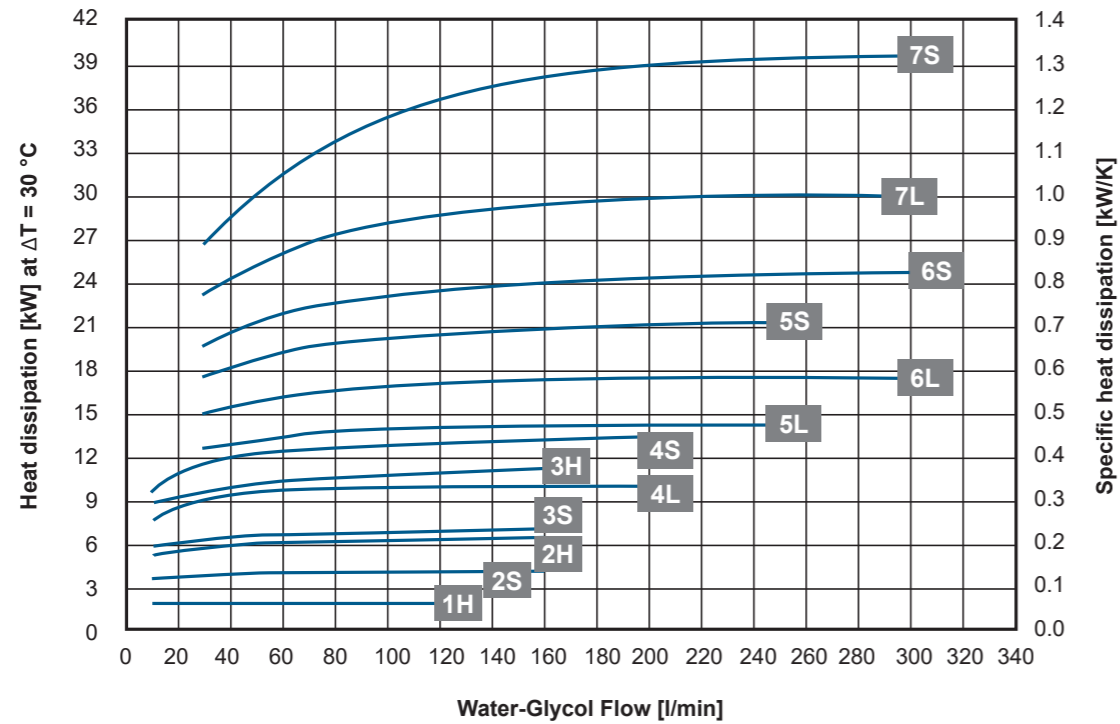


Measured at 30 mm²/s
Tolerance: ± 5 %

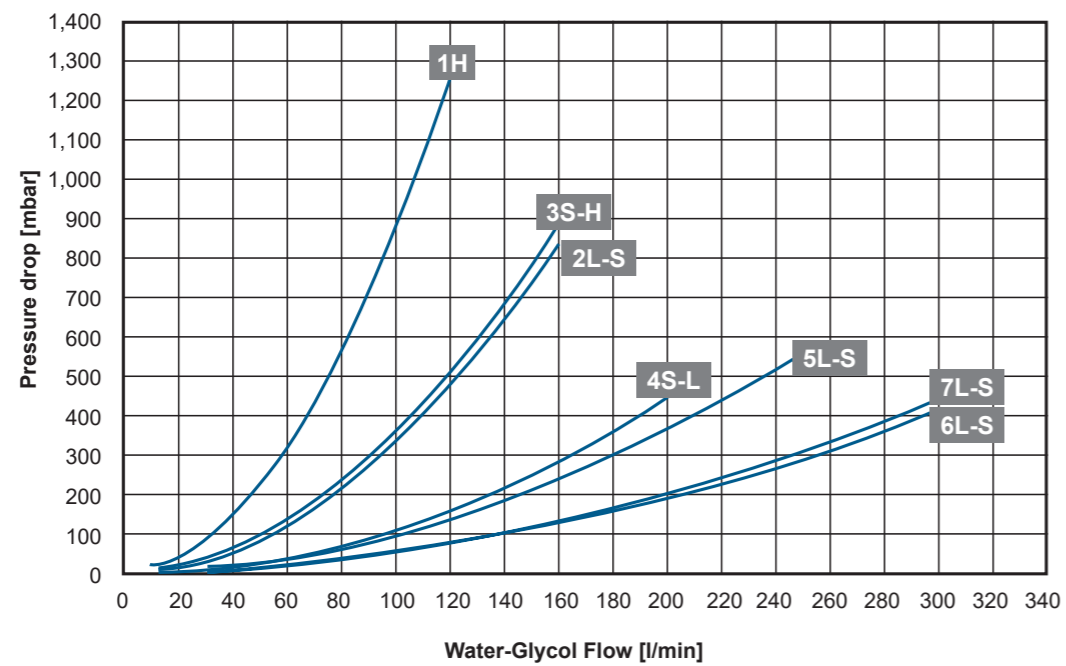
TECHNICAL DATA

Water-Glycol (60/40)

ACAF-LN 2-7

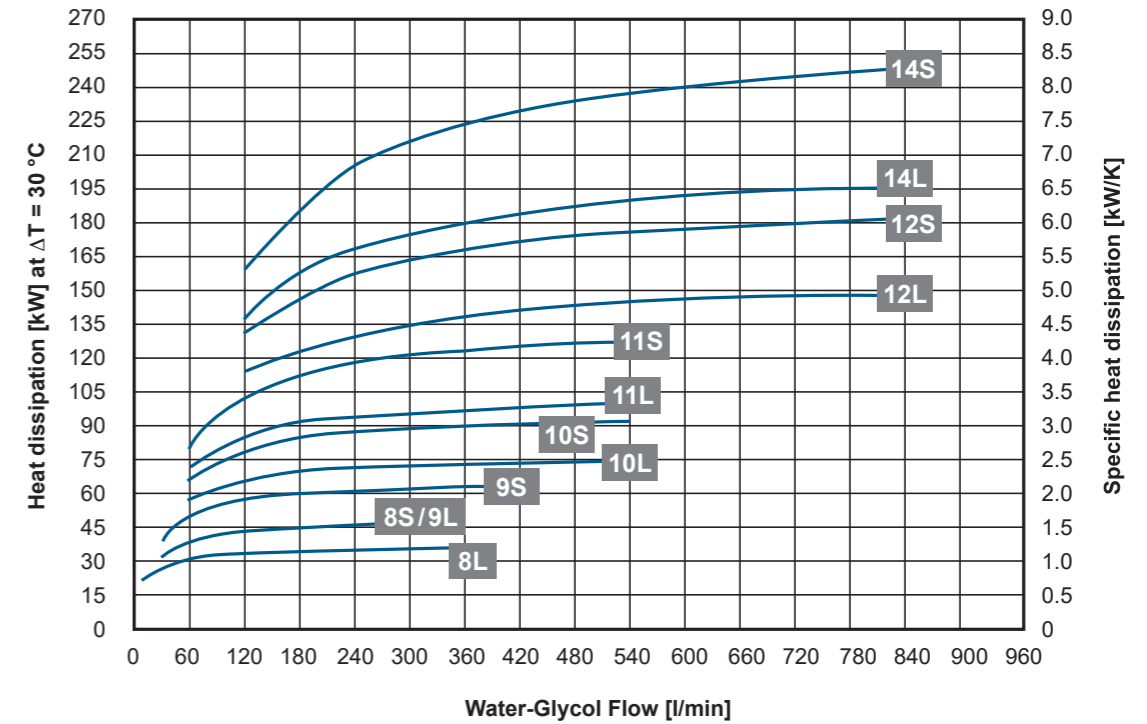


Tolerance: ± 5 %

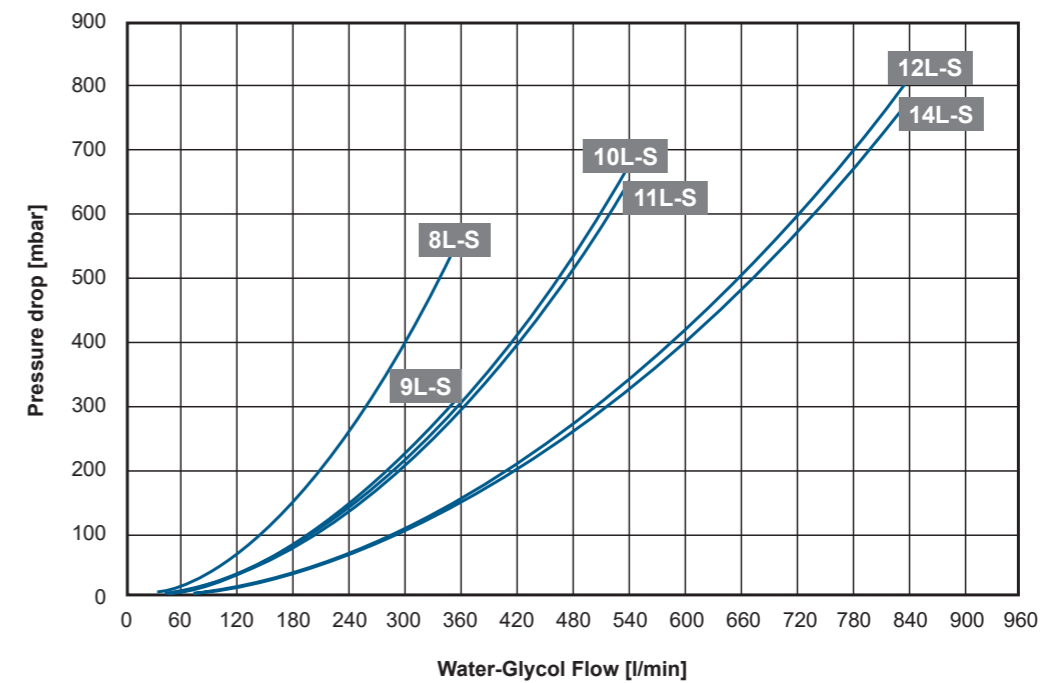


Measured at 2 mm²/s
Tolerance: ± 5 %

ACAF-LN 8-14



Tolerance: ± 5 %



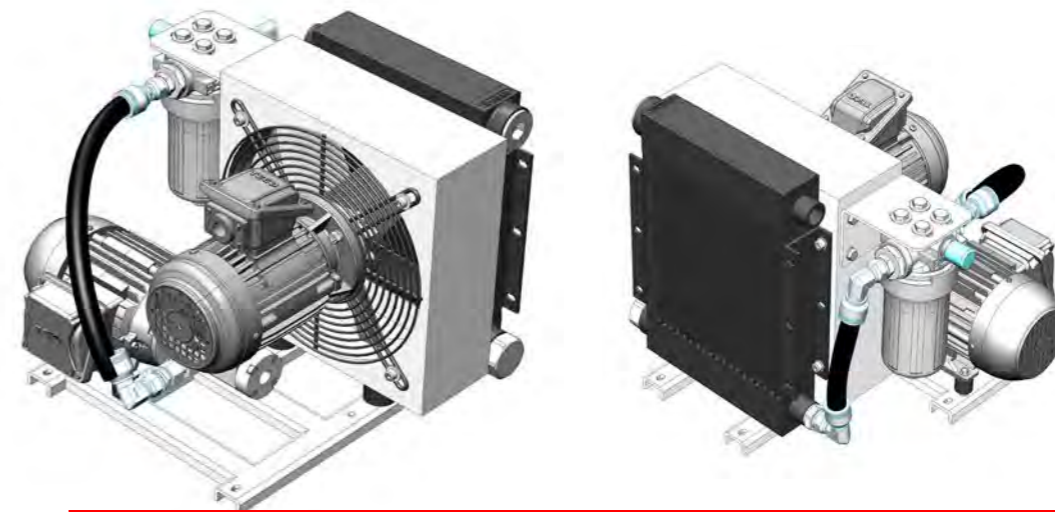
Measured at 2 mm²/s
Tolerance: ± 5 %

ACAF-LN2



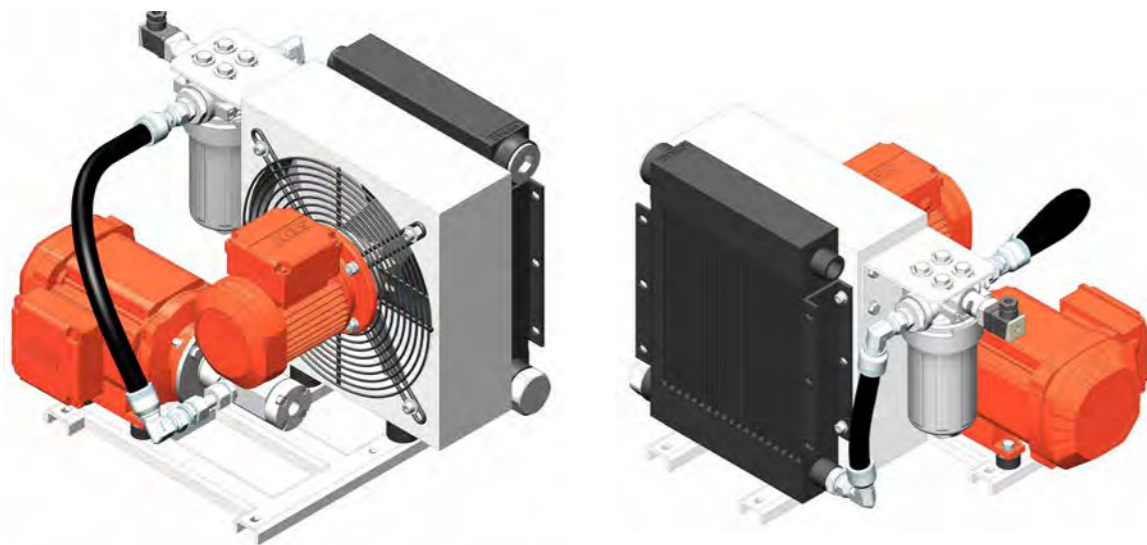
HYDAC CODE: 2355174
ACAF-LN2S/10/1.0/D/M/A/MFX100/20/1/IBT45-3

- Fluid: Mineral Oil
- Cooling capacity: 3.86 @ dT=40°C
- Fluid Flow: 10l/min
- Weight: ~30 Kg
- Pump inlet: G 1/2"
- Cooler outlet: G 3/4"
- Noise level: 64 dB(A) @1m distance
- Dimensions: 489 (L) x 417 (H) x 461 (D) ± 20



HYDAC CODE: 2355338
ACAF-LN2S/12/1.0/B/M/440-50-MIM/MFX100/20/1/IBT45-3

- Fluid: Mineral Oil
- Cooling capacity: 4.0 @ dT=40°C
- Fluid Flow: 12l/min
- Weight: ~30 Kg
- Pump inlet: G 1/2"
- Cooler outlet: G 3/4"
- Noise level: 64 dB(A) @1m distance
- Dimensions: 489 (L) x 417 (H) x 461 (D) ± 20



HYDAC CODE: 2355197
ACAF-LN2S/15/1.0/D/M/A/MFX100/20/1/IBT45-3

- Fluid: Mineral Oil
- Cooling capacity: 4.1 @ dT=40°C
- Fluid Flow: 15l/min
- Weight: ~30 Kg
- Pump inlet: G 1/2"
- Cooler outlet: G 3/4"
- Noise level: 64 dB(A) @1m distance
- Dimensions: 489 (L) x 417 (H) x 461 (D) ± 20

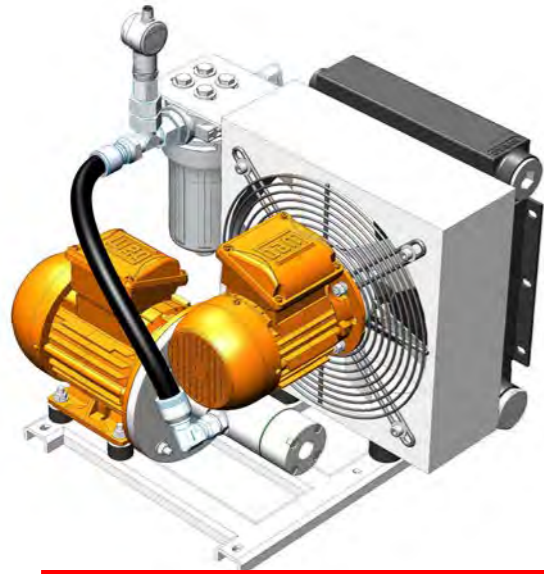


HYDAC CODE: 2355223
ACAF-LN2H/15/1.0/D/M/EXD-IP66/MFX100/20/1/IBT45-3

- Fluid: Mineral Oil
- Cooling capacity: 5.5 @ dT=40°C
- Fluid Flow: 15l/min
- Weight: ~30 Kg
- Pump inlet: G 1/2"
- Cooler outlet: G 3/4"
- Noise level: 80 dB(A) @1m distance
- Dimensions: 489 (L) x 417 (H) x 461 (D) ± 20

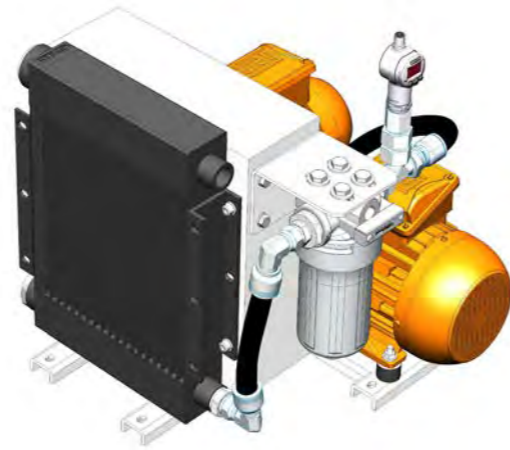
*Please note that dimensions are in mm
*Cooler and pump ports are female

ACAF-LN2



HYDAC CODE: 2355024
ACAF-LN2H/19/2.0/B/M/A/MFX100/10/1/IBP3/EDS

- Fluid: Mineral Oil
- Cooling capacity: 5.8 KW @ dT=40°C
- Fluid Flow: 19 L/min
- Weight: ~30 Kg
- Pump inlet: G 3/4"
- Cooler outlet: G 3/4"
- Noise level: 80 dB(A) @1m distance
- Dimensions: 489 (L) x 417 (H) x 461 (D) ± 20



HYDAC CODE: 2355294
ACAF-LN2H/15/1.0/D/M/A-IP66/MFX100/20/1/IBT45-3

- Fluid: Mineral Oil
- Cooling capacity: 5.5 KW @ dT=40°C
- Fluid Flow: 15 L/min
- Weight: ~30 Kg
- Pump inlet: G 3/4"
- Cooler outlet: G 3/4"
- Noise level: 80 dB(A) @1m distance
- Dimensions: 489 (L) x 417 (H) x 461 (D) ± 20

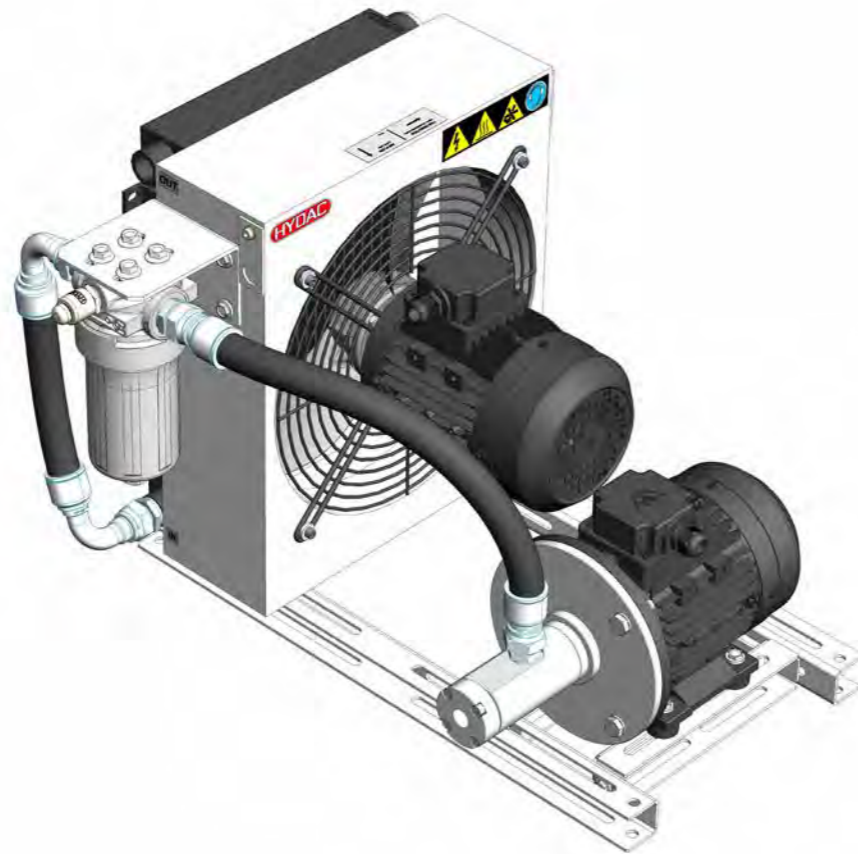


HYDAC CODE: 2355236
ACAF-LN2H/5/1.0/B/M/A/MFX100/20/1/IBT45-3

- Fluid: Mineral Oil
- Cooling capacity: 3.6 KW @ dT=40°C
- Fluid Flow: 5 L/min
- Weight: ~30 Kg
- Pump inlet: G 1/2"
- Cooler outlet: G 3/4"
- Noise level: 80 dB(A) @1m distance
- Dimensions: 489 (L) x 417 (H) x 461 (D) ± 20

*Please note that dimensions are in mm
*Cooler and pump ports are female

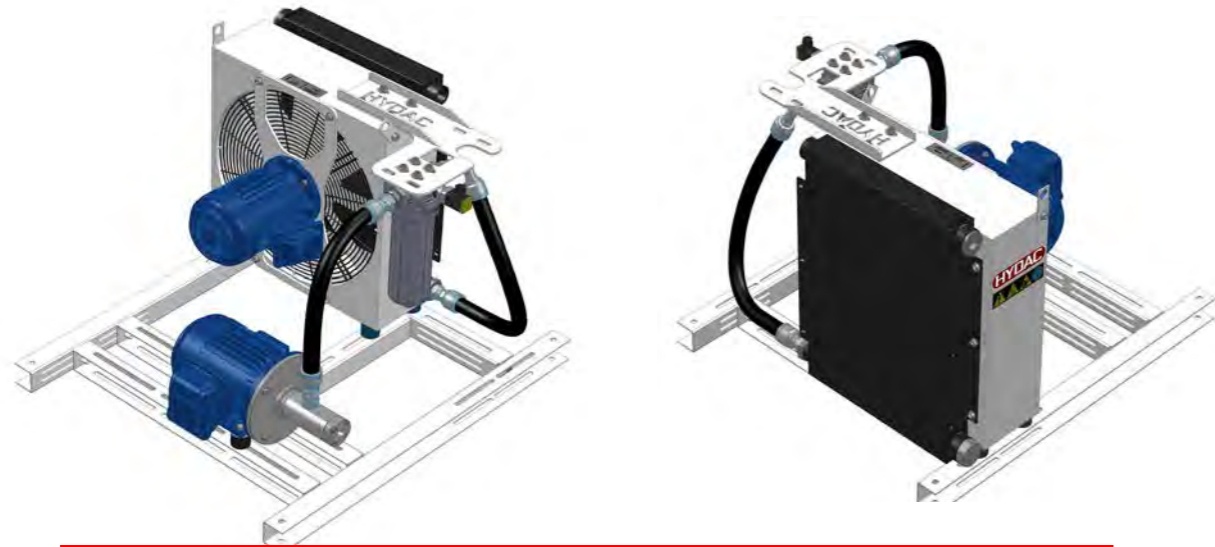
ACAF-LN3



HYDAC CODE: 2355258
ACAF-LN3H/10/1.0/B/M/A/MFX100/20/1/IBT45-3 -1957

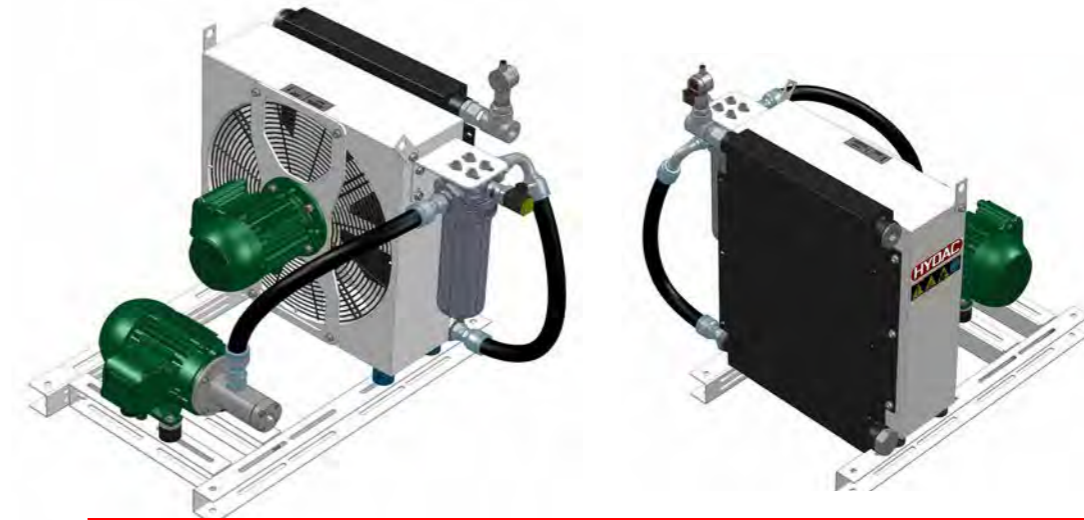
- Fluid: Mineral Oil
- Cooling capacity: 7.4 KW @ dT=40°C
- Fluid Flow: 10 L/min
- Weight: ~50 Kg
- Pump inlet: G 1/2"
- Cooler outlet: G 3/4"
- Noise level: 85 dB(A) @1m distance
- Dimensions: 340 (L) x 475 (H) x 620 (D) ± 20

ACAF-LN4



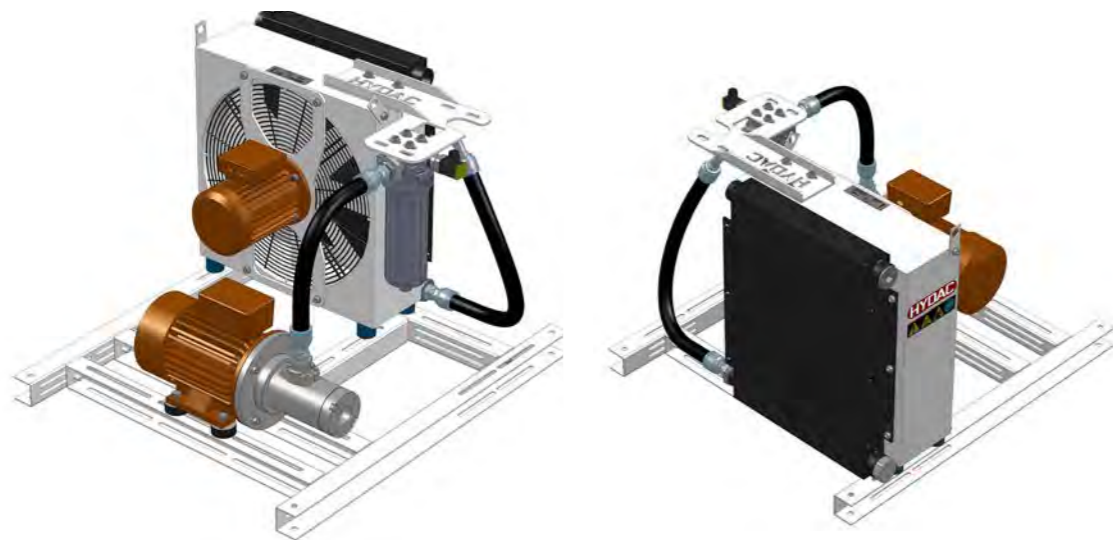
HYDAC CODE: 2355127
ACAF-LN4S/10/1.0/D/M/A/MFX200/20/1/IBT45-3

- Fluid: Mineral Oil
- Cooling capacity: 7.8 KW @ dT=40°C
- Fluid Flow: 10 L/min
- Weight: ~90 Kg
- Pump inlet: G 1/2"
- Cooler outlet: G 1"
- Noise level: 72 dB(A) @1m distance
- Dimensions: 786 (L) x 616 (H) x 880 (D) ± 20



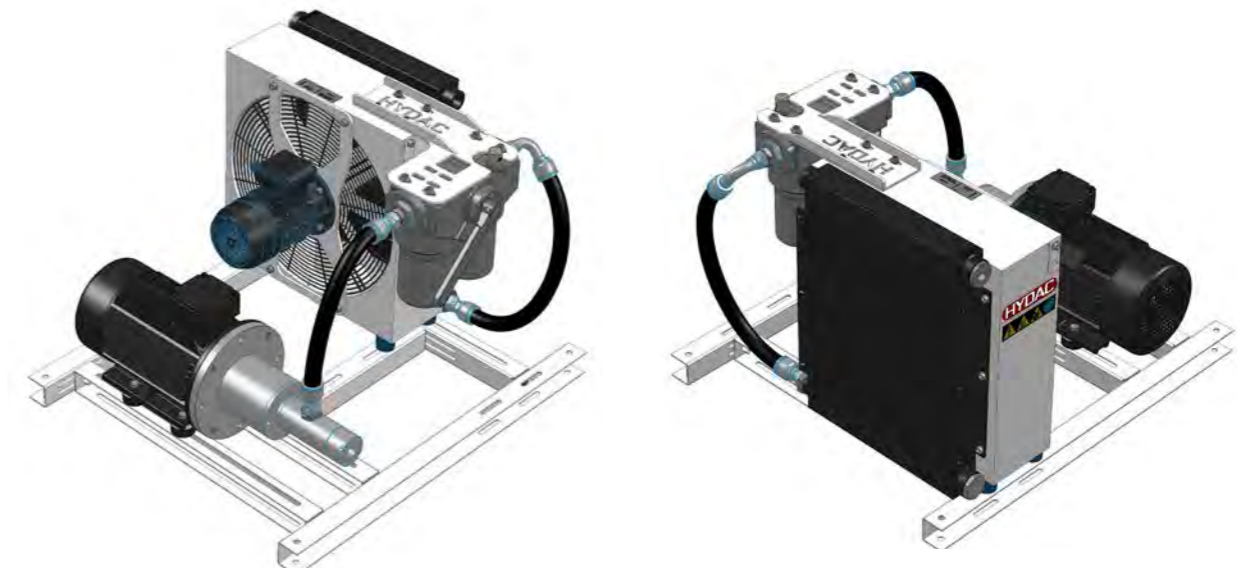
HYDAC CODE: 2355261
ACAF-LN4S/20/1.0/D/M/A/MFX200/20/1/IBT45-3

- Fluid: Mineral Oil
- Cooling capacity: 10.2 KW @ dT=40°C
- Fluid Flow: 20 L/min
- Weight: ~90 Kg
- Pump inlet: G 1/2"
- Cooler outlet: G 1"
- Noise level: 72 dB(A) @1m distance
- Dimensions: 786 (L) x 616 (H) x 880 (D) ± 20



HYDAC CODE: 2354944
ACAF-LN4S/28/1.0/D/M/A/MFX200/20/1/IBT45-3

- Fluid: Mineral Oil
- Cooling capacity: 11.5 KW @ dT=40°C
- Fluid Flow: 28 L/min
- Weight: ~90 Kg
- Pump inlet: G 1 1/4"
- Cooler outlet: G 1"
- Noise level: 72 dB(A) @1m distance
- Dimensions: 786 (L) x 616 (H) x 880 (D) ± 20

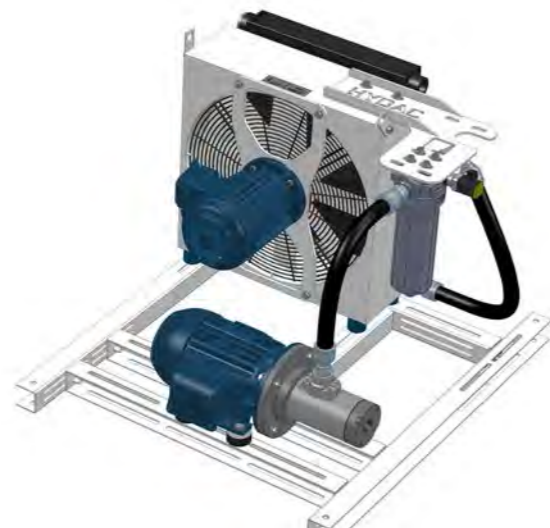


HYDAC CODE: 2354834
ACAF-LN4L/28/1.0/B/M/A/FLND160/25/1/IBP3

- Fluid: Mineral Oil
- Cooling capacity: 9.1 KW @ dT=40°C
- Fluid Flow: 28 L/min
- Weight: ~90 Kg
- Pump inlet: G1 1/4"
- Cooler outlet: G 1"
- Noise level: 67 dB(A) @1m distance
- Dimensions: 786 (L) x 616 (H) x 880 (D) ± 20

*Please note that dimensions are in mm
 *Cooler and pump ports are female

ACAF-LN4



HYDAC CODE: 2355280
ACAF-LN4S/28/1.0/D/M/A/MFX200/20/1/IBT45-3

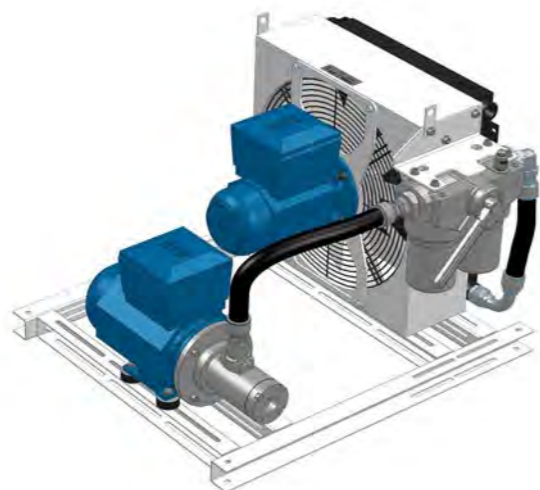
- Fluid: Mineral Oil
- Cooling capacity: 11.5 KW @ dT=40°C
- Fluid Flow: 28 L/min
- Weight: ~90 Kg
- Pump inlet: G 1"1/4
- Cooler outlet: G 1"
- Noise level: 72 dB(A) @1m distance
- Dimensions: 786 (L) x 616 (H) x 880 (D) ± 20



HYDAC CODE: 2355262
ACAF-LN4L/28/1.0/B/M/A/MFX200/20/1/IBT45-3

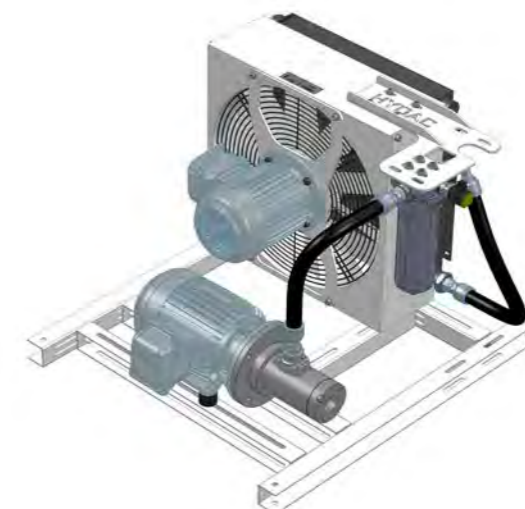
- Fluid: Mineral Oil
- Cooling capacity: 9.1 KW @ dT=40°C
- Fluid Flow: 28 L/min
- Weight: ~90 Kg
- Pump inlet: G 1"1/4
- Cooler outlet: G 1"
- Noise level: 67 dB(A) @1m distance
- Dimensions: 786 (L) x 616 (H) x 880 (D) ± 20

ACAF-LN5



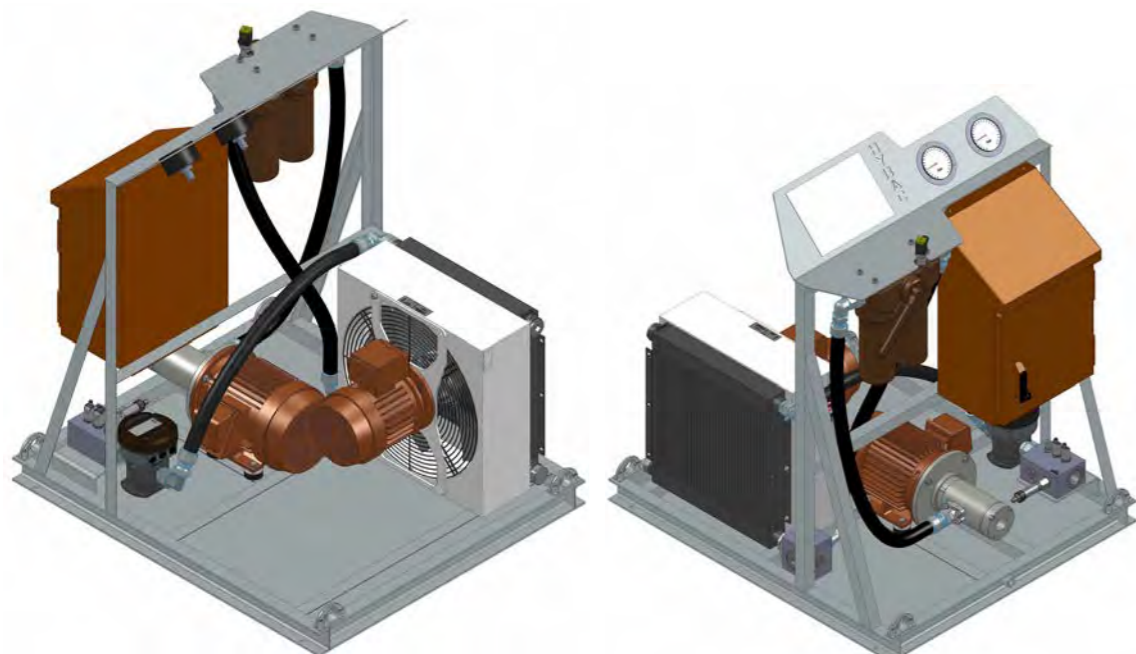
HYDAC CODE: 2355264
ACAF-LN5L/28/1.0/D/M/EX D-IP55/FLND160/25/1/IBT45-3

- Fluid: Mineral Oil
- Cooling capacity: 11.9 KW @ dT=40°C
- Fluid Flow: 28 L/min
- Weight: ~120 Kg
- Pump inlet: G 1"1/4
- Cooler outlet: G 1"
- Noise level: 65 dB(A) @1m distance
- Dimensions: 776 (L) x 713 (H) x 875 (D) ± 20



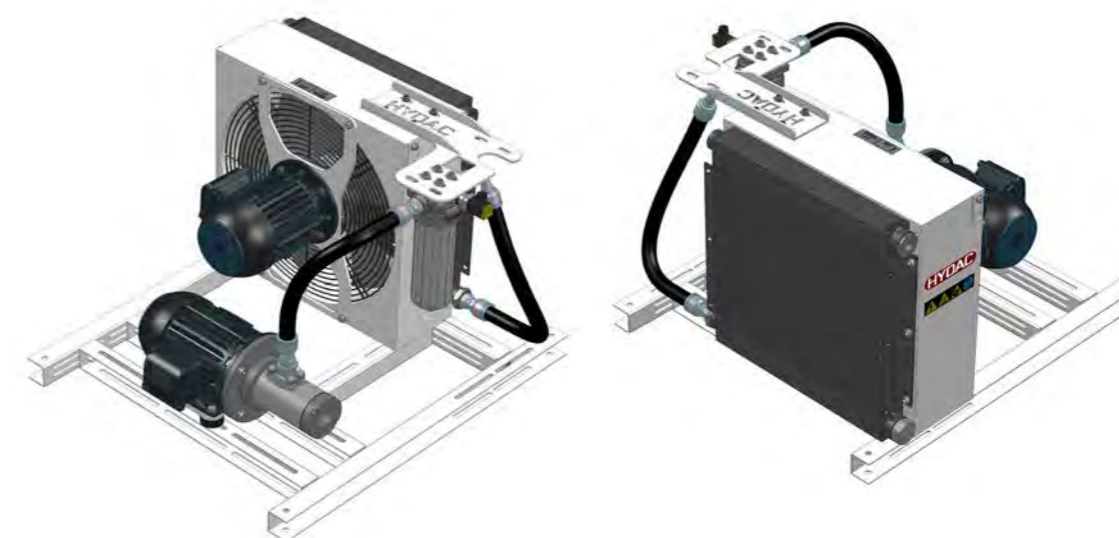
HYDAC CODE: 2355163
ACAF-LN5L/28/1.0/D/M/A/MFX200/20/1/IBT45-3

- Fluid: Mineral Oil
- Cooling capacity: 11.9 KW @ dT=40°C
- Fluid Flow: 28 L/min
- Weight: ~120 Kg
- Pump inlet: G 1"1/4
- Cooler outlet: G 1"
- Noise level: 65 dB(A) @1m distance
- Dimensions: 776 (L) x 713 (H) x 875 (D) ± 20



HYDAC CODE: 2363215
ACAF-LN5S/40/1.0/D/F/415-50-MINING/FLND250/50/IBT45-3

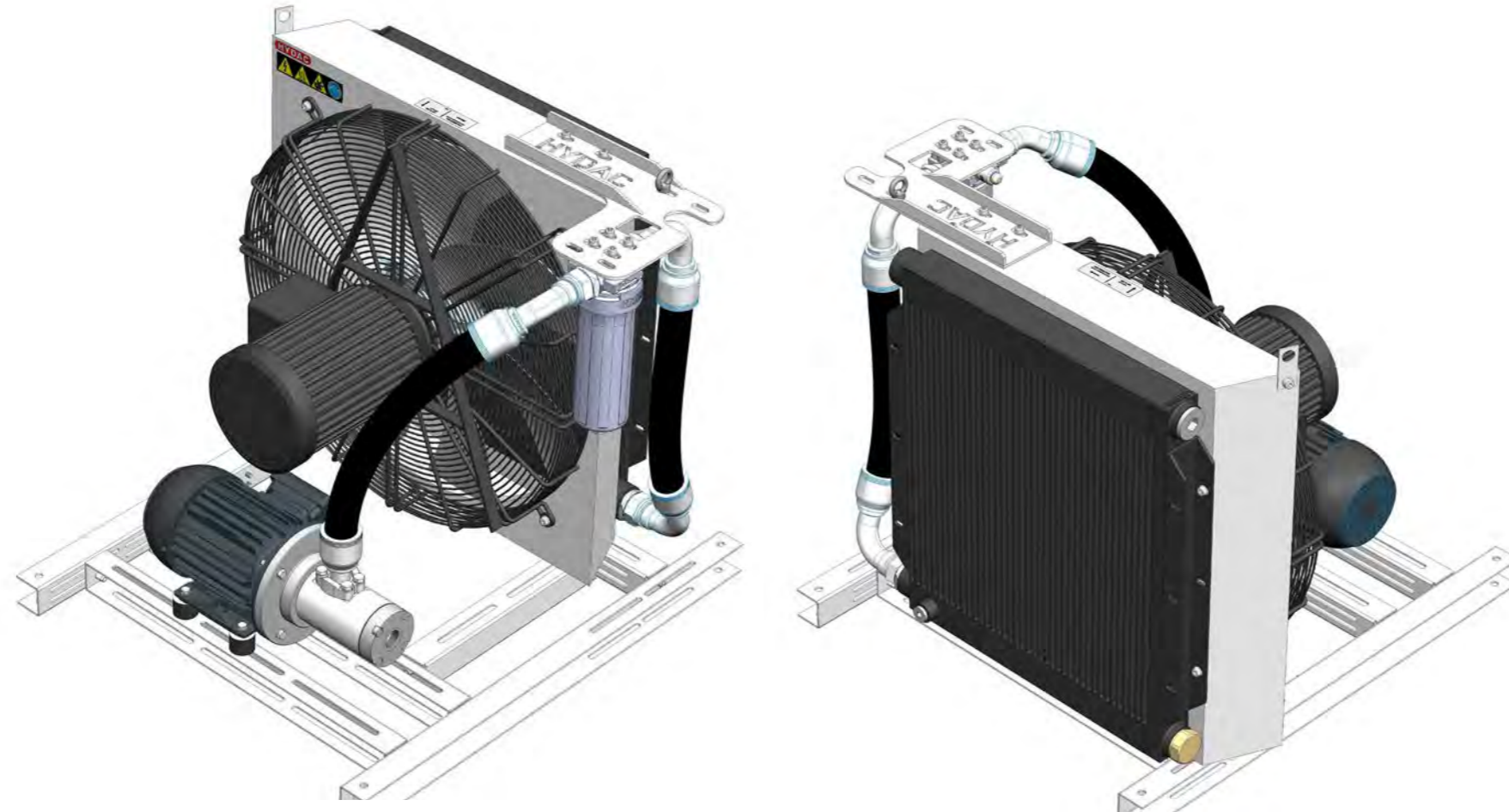
- Fluid: Mineral Oil
- Cooling capacity: 17.2 KW @ dT=40°C
- Fluid Flow: 40 L/min
- Weight: ~ TBA
- Pump inlet: G 1"1/2
- Cooler outlet: G 1"1/2
- Noise level: 77 dB(A) @1m distance
- Dimensions: 776 (L) x 713 (H) x 875 (D) ± 20



HYDAC CODE: 2354995
ACAF-LN5S/28/1.0/D/M/A/MFX200/10/1/IBT45-3

- Fluid: Mineral Oil
- Cooling capacity: 14.9 KW @ dT=40°C
- Fluid Flow: 28 L/min
- Weight: ~120 Kg
- Pump inlet: G 1"1/4
- Cooler outlet: G 1"
- Noise level: 77 dB(A) @1m distance
- Dimensions: 776 (L) x 713 (H) x 875 (D) ± 20

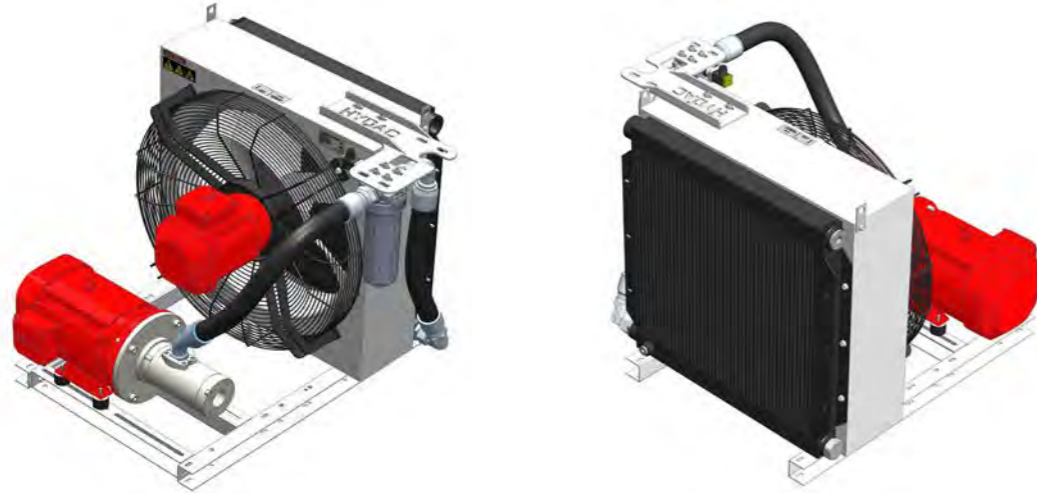
*Please note that dimensions are in mm
 *Cooler and pump ports are female



HYDAC CODE: 2355153
ACAF-LN7S/28/1.0/B/M/A/MFX200/20/1/IBT45-3

- Fluid: Mineral Oil
- Cooling capacity: 23.5 KW @ $dT=40^{\circ}C$
- Fluid Flow: 28 L/min
- Weight: ~110 Kg
- Pump inlet: G 1"1/4
- Cooler outlet: G 1"1/4
- Noise level: 84 dB(A) @1m distance
- Dimensions: 843 (L) x 720 (H) x 875 (D) \pm 20

ACAF-LN8



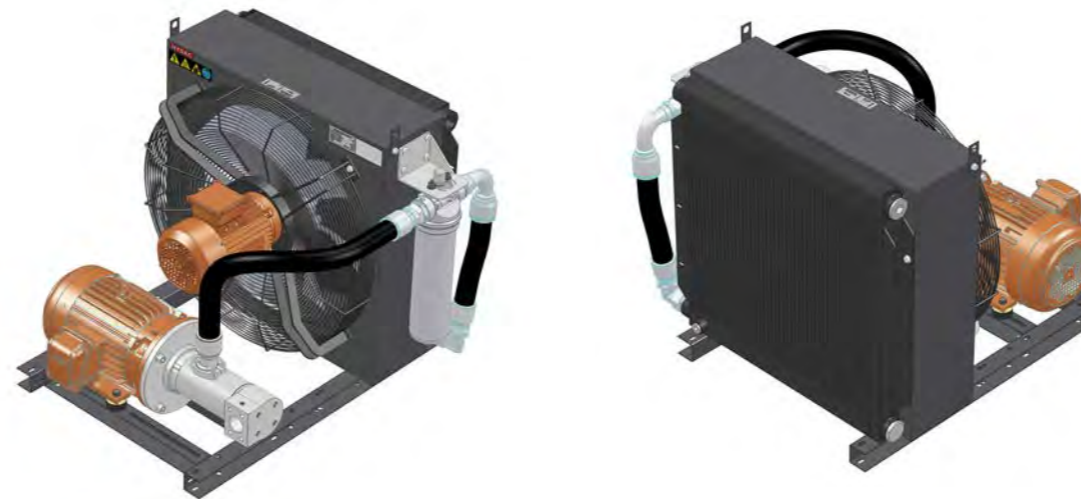
HYDAC CODE: 2354759
ACAF-LN8L/60/1.0/D/M/A/LPF280/20/1/IBT45-3

- Fluid: Mineral Oil
- Cooling capacity: 31.3 KW @ dT=40°C
- Fluid Flow: 60 L/min
- Weight: ~122 Kg
- Pump inlet: G 1"1/2
- Cooler outlet: G 1"1/4
- Noise level: 68 dB(A) @1m distance
- Dimensions: 843(L) x 760 (H) x 852 (D) ± 20



HYDAC CODE: 2354767
ACAF-LN8S/129/1.0/D/M/C-NEMA4/LPF280/5/1/1

- Fluid: Mineral Oil
- Cooling capacity: 49.5 KW @ dT=40°C
- Fluid Flow: 129 L/min
- Weight: ~170 Kg
- Pump inlet: G 1"1/2
- Cooler outlet: G 1"1/4
- Noise level: 79 dB(A) @1m distance
- Dimensions: 1056 (L) x 780 (H) x 1145 (D) ± 20



HYDAC CODE: 2355166
ACAF-LN8S/100/1.0/B/M/A/LPF280/10/1/IBP3/CPL2

- Fluid: Mineral Oil
- Cooling capacity: 46.7 KW @ dT=40°C
- Fluid Flow: 100 L/min
- Weight: ~110 Kg
- Pump inlet: 1"1/2 SAE
- Cooler outlet: G 1"1/4
- Noise level: 79 dB(A) @1m distance
- Dimensions: 853 (L) x 760 (H) x 870 (D) ± 20

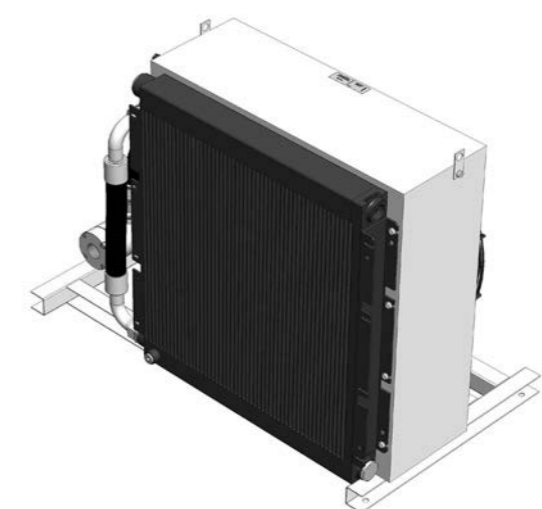
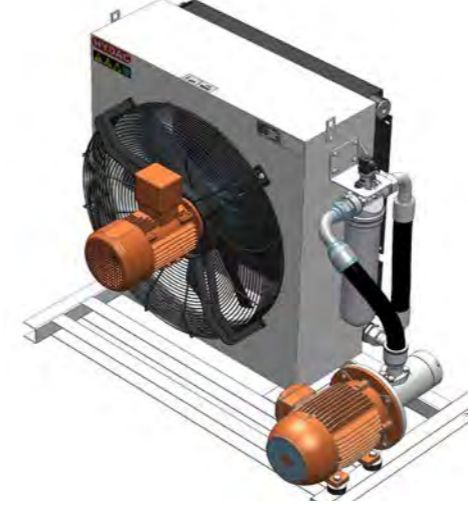
*Please note that dimensions are in mm
 *Cooler and pump ports are female

ACAF-LN9



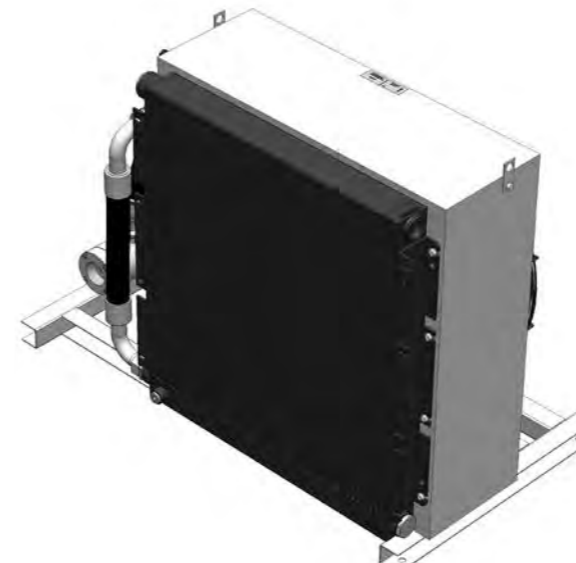
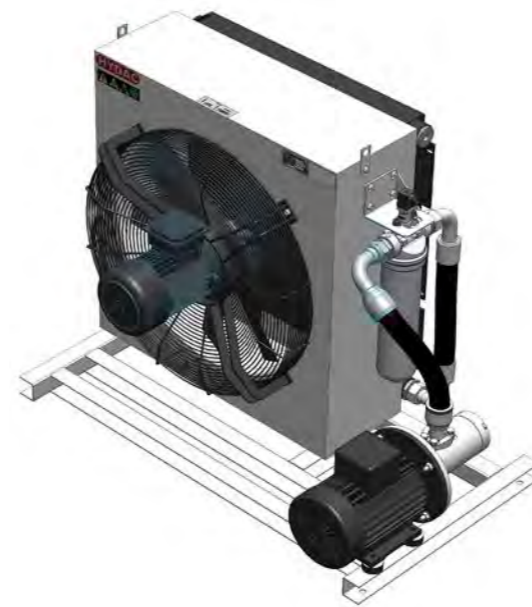
HYDAC CODE: 2354782
ACAF-LN9S/40/1.0/B/M/B/LPF280/3/1/IBP3

- Fluid: Mineral Oil
- Cooling capacity: 36.96 KW @ dT=40°C
- Fluid Flow: 40 L/min
- Weight: ~145 Kg
- Pump inlet: G 2"
- Cooler outlet: G 1"1/4
- Noise level: 80 dB(A) @1m distance
- Dimensions: 1169(L) x 905 (H) x 652 (D) ± 20



HYDAC CODE: 2355121
ACAF-LN9S/40/1.0/B/M/B/LPF280/3/1/IBP3

- Fluid: Mineral Oil
- Cooling capacity: 36.96 KW @ dT=40°C
- Fluid Flow: 40 L/min
- Weight: ~163 Kg
- Pump inlet: G 1"1/2
- Cooler outlet: G 1"1/4
- Noise level: 80 dB(A) @1m distance
- Dimensions: 1183 (L) x 905 (H) x 720 (D) ± 20

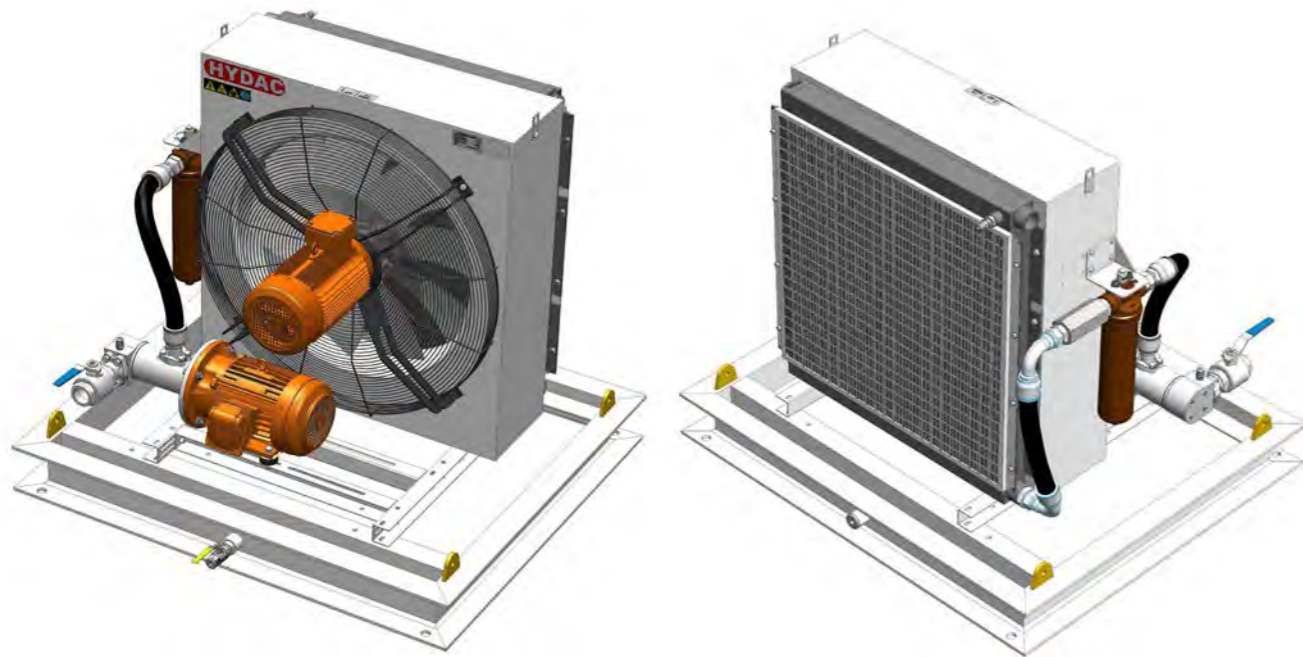


HYDAC CODE: 2354648
ACAF-LN9S/40/1.0/B/M/380-60Hz/LPF280/10/1/IBP3

- Fluid: Mineral Oil
- Cooling capacity: 36.96 KW @ dT=40°C
- Fluid Flow: 40 L/min
- Weight: ~145 Kg
- Pump inlet: G 2"
- Cooler outlet: G 1"1/4
- Noise level: 82 dB(A) @1m distance
- Dimensions: 1182 (L) x 905 (H) x 705 (D) ± 20

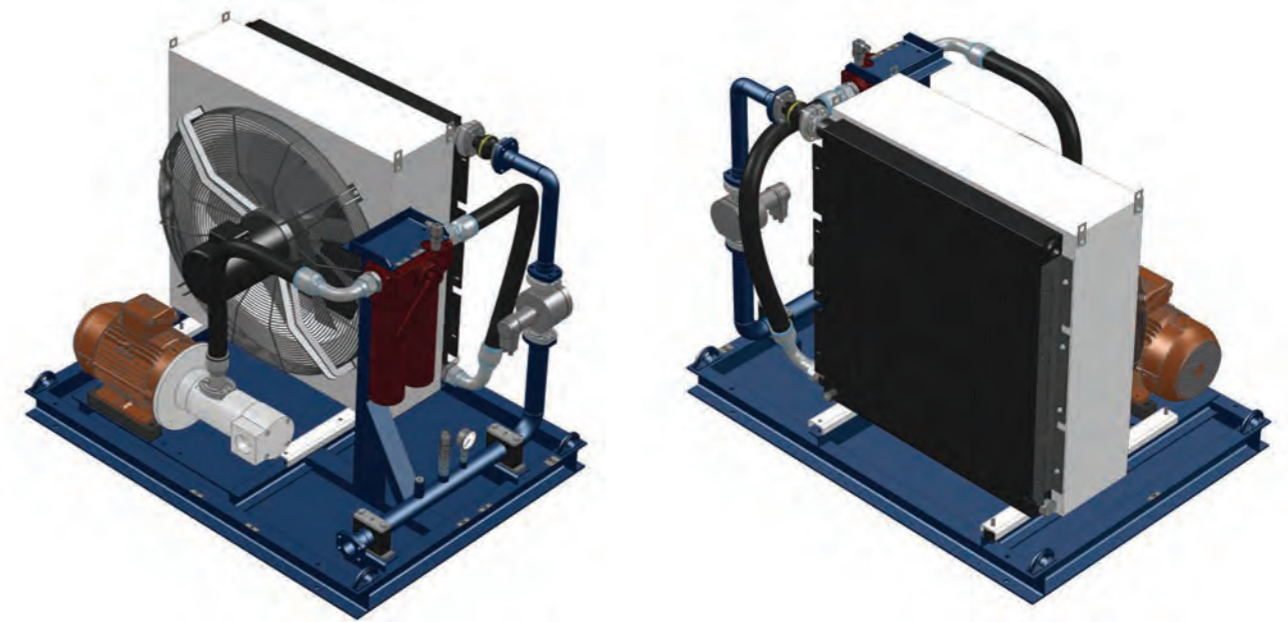
*Please note that dimensions are in mm
 *Cooler and pump ports are female

ACAF-LN10



HYDAC CODE: 2354653
ACAF-LN10S/100/5.0/F/B/LPF280/3/IBP3/LFG

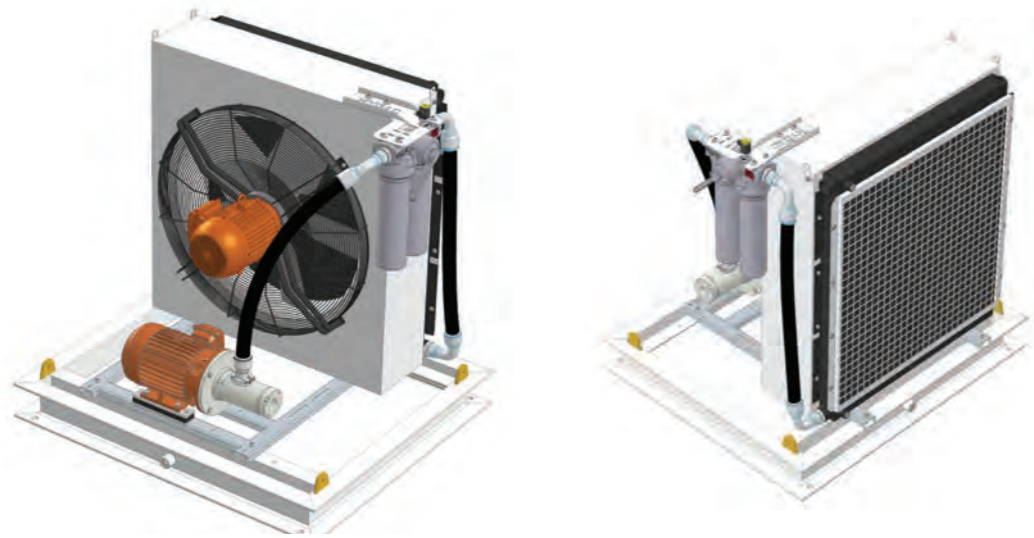
- Fluid: Mineral Oil
- Cooling capacity: 72.56 KW @ dT=40°C
- Fluid Flow: 100 L/min
- Weight: ~350 Kg
- Pump inlet: G 1"1/2
- Cooler outlet: G 1"1/2
- Noise level: 77 dB(A) @1m distance
- Dimensions: 1350 (L) x 1205 (H) x 1150 (D) ± 20



HYDAC CODE: 2355168
ACAF-LN10S/156/1.0/D/M/B/RFLD660/20/1/IBT45-3

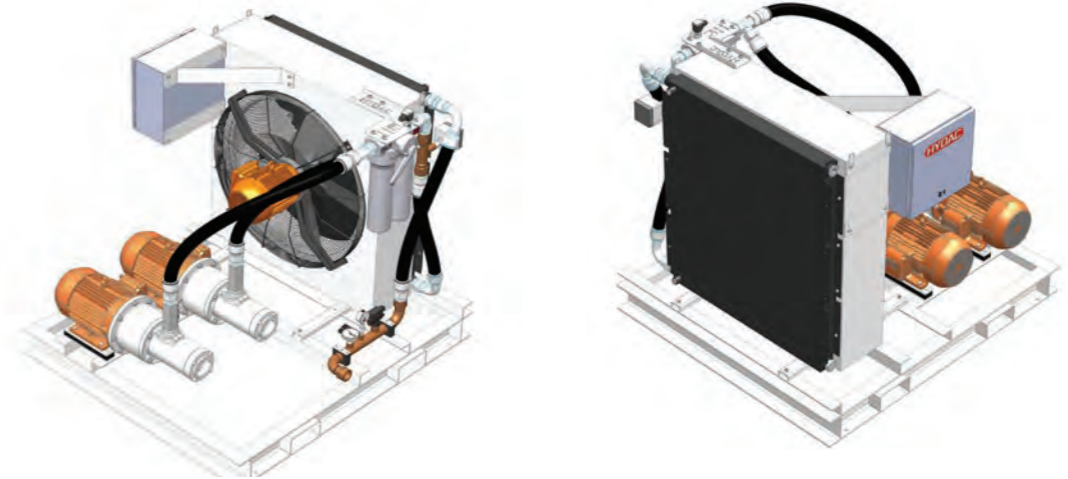
- Fluid: Mineral Oil
 - Cooling capacity: 85.72 KW @ dT=40°C
 - Fluid Flow: 156 L/min
 - Weight: ~650 Kg
 - *Paint specs: AS2700 N65 Graphite Grey
 - Pump inlet: SAE 2"1/2
 - Cooler outlet: SAE 2"
 - Noise level: 77 dB(A) @1m distance
 - Dimensions: 1800 (L) x 1272 (H) x 1650 (D) ± 20
- System includes:
- * Temperature Gauge & Sensor
 - * Flow indicator
 - * Pressure Gauge & Sensor

ACAF-LN11



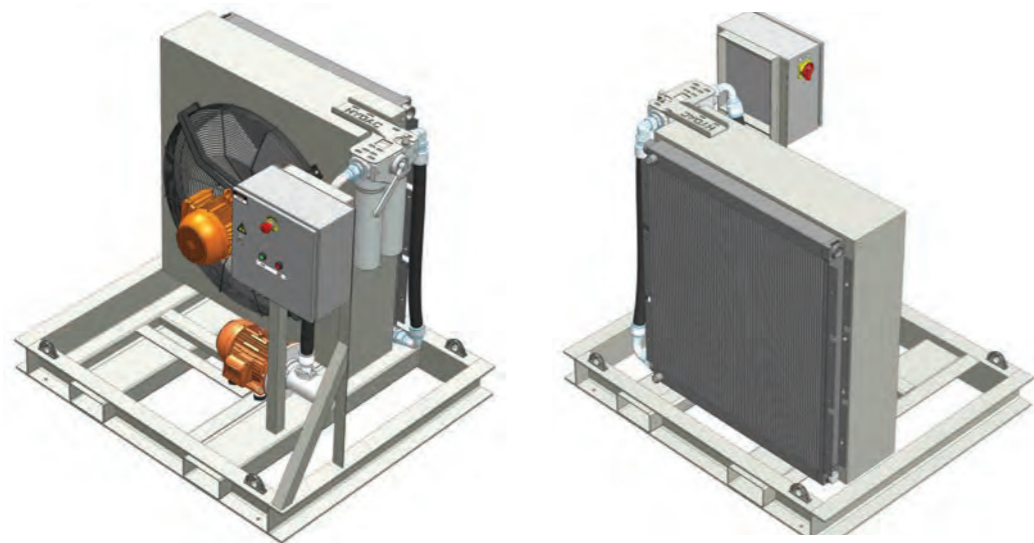
HYDAC CODE: 2363124
ACAF-LN11S/75/5.0/D/M/440-50-MIM/FLND400/20/IBT45-3

- Fluid: Mineral Oil
- Cooling capacity: 72.3 KW @ dT=40°C
- Fluid Flow: 75 L/min
- Weight: ~400 Kg
- Pump inlet: G 1 1/2
- Cooler outlet: G 1 1/2
- Noise level: 81 dB(A) @1m distance
- Dimensions: 1350 (L) x 1407 (H) x 1150 (D) ± 20



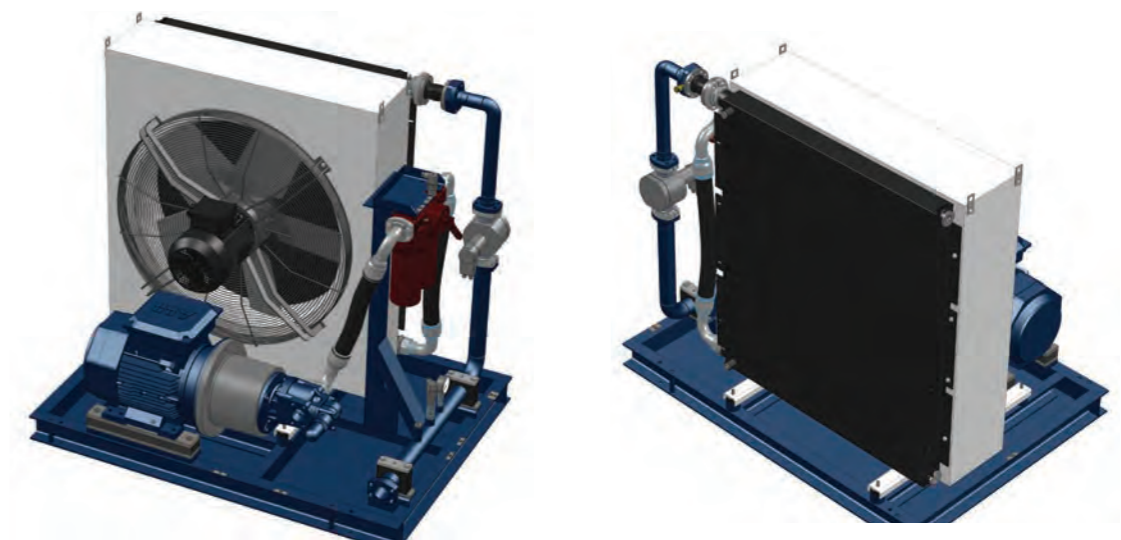
HYDAC CODE: 2363136
ACAF-LN11S/140-140/1.0/D/F/415-50-MINING/FLND400/25/IBT45-3

- Fluid: Mineral Oil
 - Cooling capacity: 99.66 KW @ dT=40°C
 - Fluid Flow: 140 L/min
 - Weight: ~600 Kg
 - Electrical Panel: 316 Stainless Steel
 - Pump inlet: G 3"
 - Cooler outlet: G 1 1/2
 - Noise level: 81 dB(A) @1m distance
 - Dimensions: 1400 (L) x 1473 (H) x 1608 (D) ± 20
 - Skid: AS1554 welding / AS2700 N14 paint
- System includes Pressure Gauge, Thermometer and Flow indicator



HYDAC CODE: 2363791
ACAF-LN11S/58/1.0/B/M/B/FLND400/20/1/SKID/ESPE

- Fluid: Mineral Oil
- Cooling capacity: 45.85 KW @ dT=40°C
- Fluid Flow: 60 L/min
- Weight: ~480 Kg
- Steel Work: AS 2700 N53 (Blue Grey)
- Motors: AS 2700 X15 (Orange)
- Pump inlet: G 1 1/2
- Cooler outlet: G 1 1/2
- Noise level: 81 dB(A) @1m distance
- Dimensions: 1500 (L) x 1350 (H) x 1250 (D) ± 20
- Electrical Panel: 316 Stainless Steel



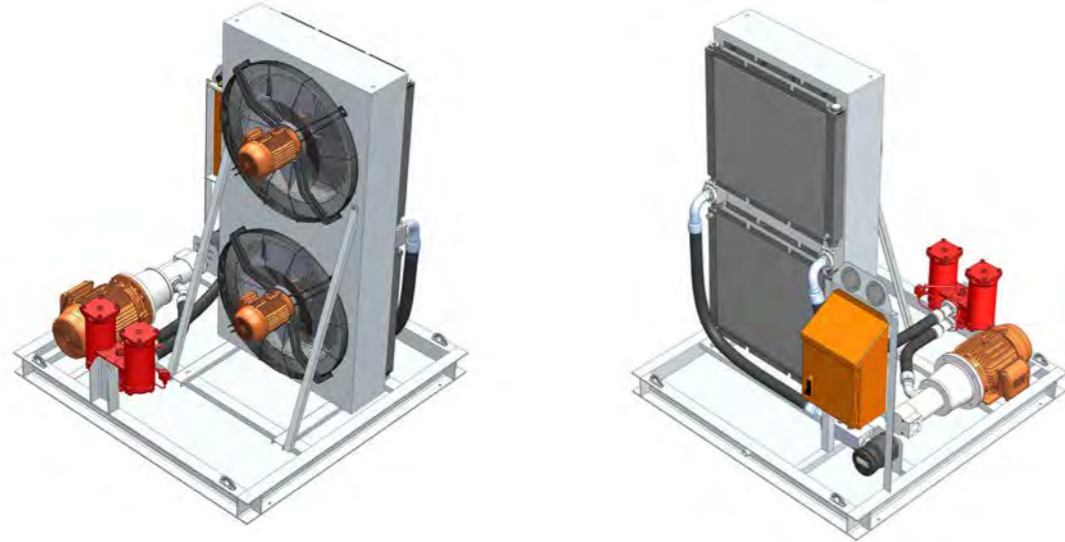
HYDAC CODE: 4156350
ACAF-LN11S/160/1.0/D/M/B/FLND250/50/RAL5017/IBT50-3

- Fluid: Mineral Oil
- Cooling capacity: 105.1 KW @ dT=40°C
- Fluid Flow: 160 L/min
- Weight: ~580 Kg
- Pump inlet: SAE 2"
- Cooler outlet: G 1 1/2
- Noise level: 81 dB(A) @1m distance
- Dimensions: 1440 (L) x 1345 (H) x 1050 (D) ± 20
- Primer Paint: intercure 200 min 75 µm
- Intermediate Paint: intercure 420 min 150 µm
- Top Paint: interseal 670HS min 150 µm
- Colour: RAL5017 Traffic Blue

System includes positive displacement flowmeter and electronic pressure switch

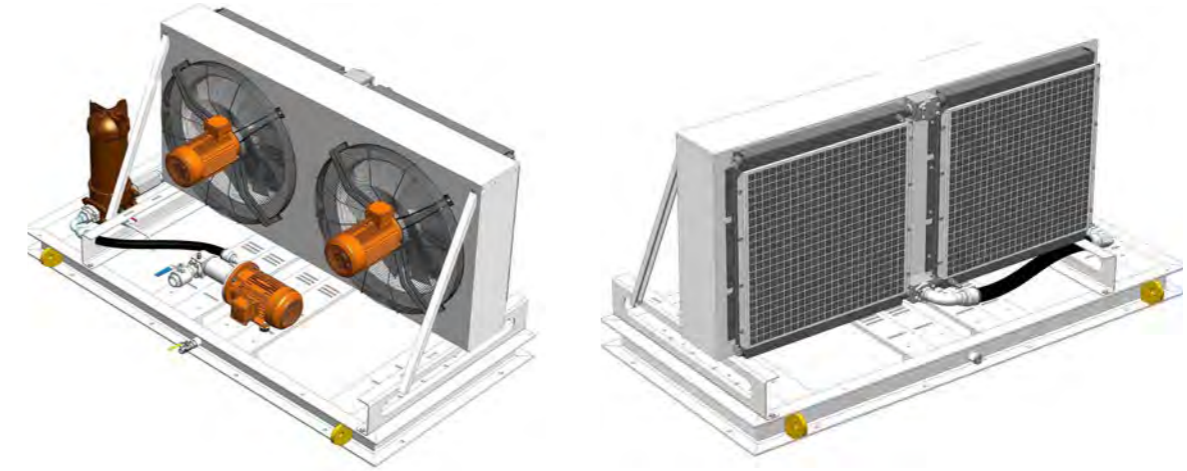
*Please note that dimensions are in mm
*Cooler and pump ports are female

ACAF-LN12



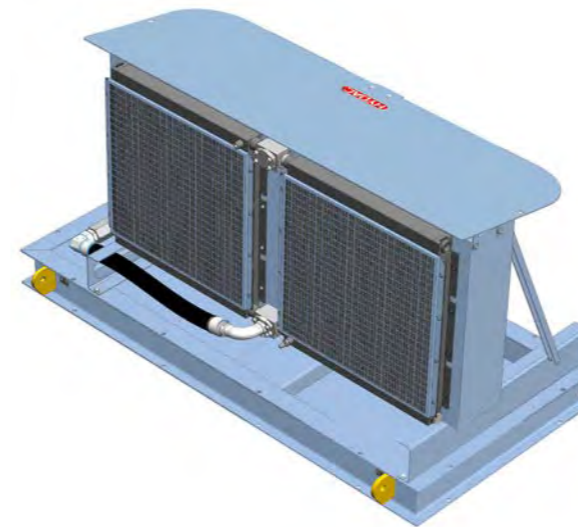
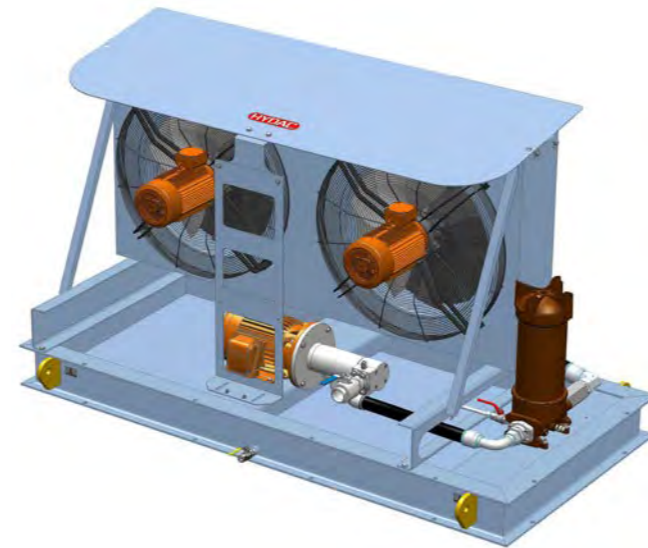
HYDAC CODE: 2355388
ACAF-LN12S/170/1.0/D/F/415-50-IP66-MINING/RFLD661/IBT45-3

- Fluid: Mineral Oil
 - Cooling capacity: 134.82 KW @ dT=40°C
 - Fluid Flow: 170 L/min
 - Weight: ~950 Kg
 - Pump inlet: SAE 3"
 - Cooler outlet: G 2"
 - Noise level: 80 dB(A) @1m distance
 - Dimensions: 1800 (L) x 2280 (H) x 1800 (D) ± 20
- System includes Pressure Gauge, Thermometer, Flow indicator, Flow meter and Test Points



HYDAC CODE: 2354654
ACAF-LN12S/150/5.0/F/B/1/NF1350/3/IBP3/LFG

- Fluid: Mineral Oil
- Cooling capacity: 126.82 KW @ dT=40°C
- Fluid Flow: 150 L/min
- Weight: ~700 Kg
- Pump inlet: G 1"1/2
- Cooler outlet: G 1"1/4
- Noise level: 80 dB(A) @1m distance
- Dimensions: 2500 (L) x 1350 (H) x 1200 (D) ± 20

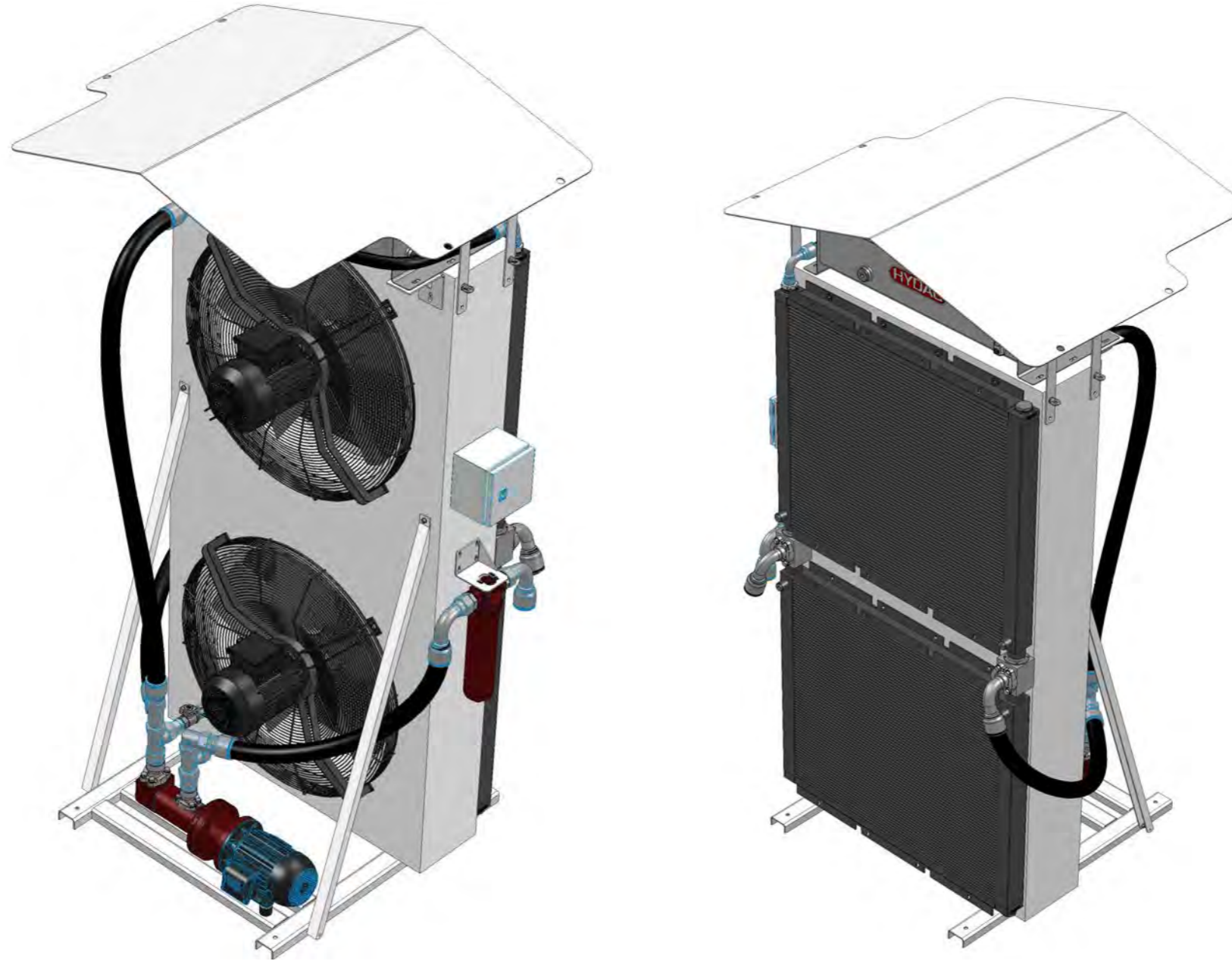


HYDAC CODE: 2354611
ACAF-LN12S/210/5.0/F/B/1/NF1350/3/IBP3/LFG

- Fluid: Mineral Oil
- Cooling capacity: 148.21 KW @ dT=40°C
- Fluid Flow: 210 L/min
- Weight: ~900 Kg
- Pump inlet: G 2"
- Cooler outlet: G 1"1/4
- Noise level: 80 dB(A) @1m distance
- Dimensions: 2500 (L) x 1497 (H) x 1374 (D) ± 20

*Please note that dimensions are in mm
 *Cooler and pump ports are female

ACAF-LN14



HYDAC CODE: 2354775
ACAF-LN14MI E160-13

- Fluid: Mineral Oil / Water Glycol
- Cooling capacity: 205 KW @ $dT=40^{\circ}\text{C}$
- Fluid Flow: 300 L/min
- Weight: ~400 Kg
- Includes frequency inverter which controls the fan speed depending on the fluid temperature.
- Pump inlet: TBA
- Cooler outlet: 2" SAE
- Noise level: 84 dB(A) @1m distance
- Dimensions: 1058(L) x 2296 (H) x 950 (D) \pm 20

*Please note that dimensions are in mm
*Cooler and pump ports are female

Design your own ACAF

If you couldn't find what you need. Feel free to fill out one of the below forms and contact our technical sales team for your customized ACAF cooler. info@hydac.com.au

Gearbox Lubrication system

1. How many reductions are in the gearbox?

2. What's the system's input power?

3. What's the oil sump volume?

4. What's your oil type? eg ISO VG320

5. What's your gearbox type/model? (optional)

6. Would you like an electrical panel or accessories mounted?

7. Do you have any paint specifications?

8. Any cold start? Or what's the minimum oil temperature?

ACAF Cooling system

1. What's your oil type? eg ISO VG320

2. What's the system's maximum temperature?

3. What's the maximum ambient temperature on site?

4. What's the required cooling capacity (KW)? OR what's the oil target temperature after cooling?

5. What's the required oil flow rate?

6. Any cold start? Or what's the minimum oil temperature?

7. What's the maximum permitted pressure loss? (optional)

8. Would you like an electrical panel or accessories mounted? any paint specifications?

Notes

Simply



1
Fill it



2
Scan it



3
Email it
info@hydac.com.au

HYDAC